

Product datasheet for **TP301351M**

EIF2B2 (NM_014239) Human Recombinant Protein

Product data:

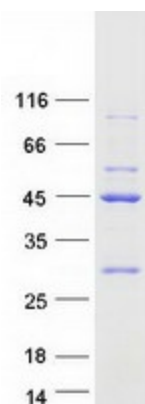
Product Type:	Recombinant Proteins
Description:	Recombinant protein of human eukaryotic translation initiation factor 2B, subunit 2 beta, 39kDa (EIF2B2), 100 µg
Species:	Human
Expression Host:	HEK293T
Expression cDNA Clone or AA Sequence:	>RC201351 protein sequence Red =Cloning site Green =Tags(s)
	<p>MPGSAAKGSELSEKSERIESFVETLKRGGGPRSSSEEMARETLGLLRQIITDHRWSNAGELMELIRREGRRMATA AQPSETTVGNMVRRLKIIREEYGRLLHGRTDESDQQESLHKLLTSGGLNEDFSFHAYQLQSNIIIEAINEL LVELEGTMENIAAQALEHIHSNEVIMTIGFSRTVEAFLKEAARKRKFHVIVAEAPFCQGHMAVNLSKA GIETTVMTDAAIFAVMSRVNKVIIGTKTILANGALRAVTGHTLALAAKHHSTPLIVCAPMFKLSPQFPN EEDSFHKFVAPEEVLDPFTEGDILEKVSVHCPVFDYVPELITLFIISNIGGNAPSYIYRLMSELYHPDDHV L</p> <p>TRTRPLEQKLISEEDLAANDILDYKDDDDKV</p>
Tag:	C-Myc/DDK
Predicted MW:	38.8 kDa
Concentration:	>0.05 µg/µL as determined by microplate BCA method
Purity:	> 80% as determined by SDS-PAGE and Coomassie blue staining
Buffer:	25 mM Tris-HCl, 100 mM glycine, pH 7.3, 10% glycerol
Preparation:	Recombinant protein was captured through anti-DDK affinity column followed by conventional chromatography steps.
Note:	For testing in cell culture applications, please filter before use. Note that you may experience some loss of protein during the filtration process.
Storage:	Store at -80°C.
Stability:	Stable for 12 months from the date of receipt of the product under proper storage and handling conditions. Avoid repeated freeze-thaw cycles.
RefSeq:	NP_055054



[View online »](#)

Locus ID:	8892
UniProt ID:	P49770 , Q53XC2
RefSeq Size:	1557
Cytogenetics:	14q24.3
RefSeq ORF:	1053
Synonyms:	EIF-2Bbeta; EIF2B
Summary:	This gene encodes the beta subunit of eukaryotic initiation factor-2B (EIF2B). EIF2B is involved in protein synthesis and exchanges GDP and GTP for its activation and deactivation. [provided by RefSeq, Aug 2011]

Product images:



Coomassie blue staining of purified EIF2B2 protein (Cat# [TP301351]). The protein was produced from HEK293T cells transfected with EIF2B2 cDNA clone (Cat# [RC201351]) using MegaTran 2.0 (Cat# [TT210002]).