

Product datasheet for **TP301337M**

IFT20 (NM_174887) Human Recombinant Protein

Product data:

Product Type:	Recombinant Proteins
Description:	Recombinant protein of human intraflagellar transport 20 homolog (Chlamydomonas) (IFT20), 100 µg
Species:	Human
Expression Host:	HEK293T
Expression cDNA Clone or AA Sequence:	>RC201337 protein sequence Red =Cloning site Green =Tags(s) MAKDILGEAGLHFDELNKLRLVDPEVTQQTIELKEECKDFVDKIGQFQKIVGGGLIELVDQLAKEAENEKM KSLAVSPRLECTGAISAHCKLCLSDSSDPTSPSRVGGTTGHRCELAQIYSKAERSSTAATSSPNSRKE NAARKVSG TRTRPLEQKLISEEDLAANDILDYKDDDDKV
Tag:	C-Myc/DDK
Predicted MW:	15.8 kDa
Concentration:	>0.05 µg/µL as determined by microplate BCA method
Purity:	> 80% as determined by SDS-PAGE and Coomassie blue staining
Buffer:	25 mM Tris-HCl, 100 mM glycine, pH 7.3, 10% glycerol
Preparation:	Recombinant protein was captured through anti-DDK affinity column followed by conventional chromatography steps.
Note:	For testing in cell culture applications, please filter before use. Note that you may experience some loss of protein during the filtration process.
Storage:	Store at -80°C.
Stability:	Stable for 12 months from the date of receipt of the product under proper storage and handling conditions. Avoid repeated freeze-thaw cycles.
RefSeq:	<u>NP_777547</u>
Locus ID:	90410
UniProt ID:	<u>Q8IY31</u>


[View online »](#)

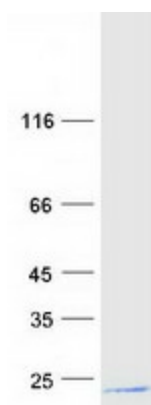
RefSeq Size: 1006

Cytogenetics: 17q11.2

RefSeq ORF: 444

Summary: This gene encodes a intraflagellar transport protein important for intracellular transport. The encoded protein forms part of a complex involved in trafficking of proteins from the Golgi body, including recycling of immune signalling components (Finetti et al., PubMed: 19855387). This gene is part of a complex set of sense-antisense loci that may be co-regulated. Alternatively spliced transcript variants encoding multiple isoforms have been observed for this gene. A pseudogene of this gene is located on the long arm of chromosome 14.[provided by RefSeq, Jun 2012]

Product images:



Coomassie blue staining of purified IFT20 protein (Cat# [TP301337]). The protein was produced from HEK293T cells transfected with IFT20 cDNA clone (Cat# [RC201337]) using MegaTran 2.0 (Cat# [TT210002]).