

Product datasheet for **TP301334M**

PP2A-alpha (PPP2CA) (NM_002715) Human Recombinant Protein

Product data:

Product Type:	Recombinant Proteins
Description:	Recombinant protein of human protein phosphatase 2 (formerly 2A), catalytic subunit, alpha isoform (PPP2CA), 100 µg
Species:	Human
Expression Host:	HEK293T
Expression cDNA Clone or AA Sequence:	>RC201334 protein sequence Red =Cloning site Green =Tags(s)
	<p>MDEKVFTKELDQWIEQLNECKQLSESQVKSLCEKAKEILTKESNVQEVRCPVTVCGDVHGQFHDLMELEFR IGGKSPDTNYLFMGDYVDRGYYSVETVLLVALKVRYRERITILRGNHESRQITQVYGFYDECLRKYGNA NWKYFTDLFDYLPLTALVDGQIFCLHGGLSPSIDTLDHIRALDRLQVEPHEGPMCDLLWSDPDDRGGWG ISPRGAGYTFGQDISETFNHANGTLVSRAHQLVMEGYNWCHDRNVVIFAPNYCYRCGNQAAIMELDD TLKYSFLQFDPAPRRGEPHVTRRTPDYFL</p> <p>TRTRPLEQKLISEEDLAANDILDYKDDDDKV</p>
Tag:	C-Myc/DDK
Predicted MW:	35.4 kDa
Concentration:	>0.05 µg/µL as determined by microplate BCA method
Purity:	> 80% as determined by SDS-PAGE and Coomassie blue staining
Buffer:	25 mM Tris-HCl, 100 mM glycine, pH 7.3, 10% glycerol
Preparation:	Recombinant protein was captured through anti-DDK affinity column followed by conventional chromatography steps.
Note:	For testing in cell culture applications, please filter before use. Note that you may experience some loss of protein during the filtration process.
Storage:	Store at -80°C.
Stability:	Stable for 12 months from the date of receipt of the product under proper storage and handling conditions. Avoid repeated freeze-thaw cycles.
RefSeq:	NP_002706
Locus ID:	5515



[View online »](#)

UniProt ID: [P67775](#), [B3KUN1](#)

RefSeq Size: 2643

Cytogenetics: 5q31.1

RefSeq ORF: 927

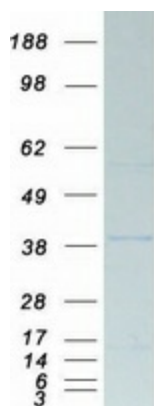
Synonyms: NEDLBA; PP2Ac; PP2CA; PP2Calpha; RP-C

Summary: This gene encodes the phosphatase 2A catalytic subunit. Protein phosphatase 2A is one of the four major Ser/Thr phosphatases, and it is implicated in the negative control of cell growth and division. It consists of a common heteromeric core enzyme, which is composed of a catalytic subunit and a constant regulatory subunit, that associates with a variety of regulatory subunits. This gene encodes an alpha isoform of the catalytic subunit. [provided by RefSeq, Jul 2008]

Protein Families: Druggable Genome, Phosphatase, Transcription Factors

Protein Pathways: Long-term depression, Oocyte meiosis, TGF-beta signaling pathway, Tight junction, Wnt signaling pathway

Product images:



Coomassie blue staining of purified PPP2CA protein (Cat# [TP301334]). The protein was produced from HEK293T cells transfected with PPP2CA cDNA clone (Cat# [RC201334]) using MegaTran 2.0 (Cat# [TT210002]).