

## Product datasheet for TP301334

### PP2A-alpha (PPP2CA) (NM\_002715) Human Recombinant Protein

#### Product data:

<b>Product Type:</b>	Recombinant Proteins
<b>Description:</b>	Recombinant protein of human protein phosphatase 2 (formerly 2A), catalytic subunit, alpha isoform (PPP2CA), 20 µg
<b>Species:</b>	Human
<b>Expression Host:</b>	HEK293T
<b>Expression cDNA Clone or AA Sequence:</b>	>RC201334 protein sequence <b>Red</b> =Cloning site <b>Green</b> =Tags(s)
	MDEKVFTELKELDQWIEQLNECKQLSESQVKSLCEKAKEILTKESNVQEVRCPVTVCGDVHGGQFHDLMELFR IGGKSPDTNYLFMGDYVDRGYYSVETVLLVALKVRYRERITILRGNHESRQITQVYGFYDECLRKYGNA NWKYFTDLFDYLPLTALVDGQIFCLHGGLSPSIDTLDHIRALDRLQVEPHEGPMCDLLWSDPDDRGGW G ISPRGAGYTFGQDISETFNHANGLTLVSRHQVMEGYNWCHDRNWTIFSAPNYCYRCGNQAAIMELD D TLKYSFLQFDPAPRRGEPHVTRRTPDYFL
	<b>TRTRPLEQKLISEEDLAANDILDYKDDDDKV</b>
<b>Tag:</b>	C-Myc/DDK
<b>Predicted MW:</b>	35.4 kDa
<b>Concentration:</b>	>0.05 µg/µL as determined by microplate BCA method
<b>Purity:</b>	> 80% as determined by SDS-PAGE and Coomassie blue staining
<b>Buffer:</b>	25 mM Tris-HCl, 100 mM glycine, pH 7.3, 10% glycerol
<b>Preparation:</b>	Recombinant protein was captured through anti-DDK affinity column followed by conventional chromatography steps.
<b>Note:</b>	For testing in cell culture applications, please filter before use. Note that you may experience some loss of protein during the filtration process.
<b>Storage:</b>	Store at -80°C.
<b>Stability:</b>	Stable for 12 months from the date of receipt of the product under proper storage and handling conditions. Avoid repeated freeze-thaw cycles.



[View online »](#)

RefSeq: [NP\\_002706](#)

Locus ID: 5515

UniProt ID: [P67775](#)

RefSeq Size: 2643

Cytogenetics: 5q31.1

RefSeq ORF: 927

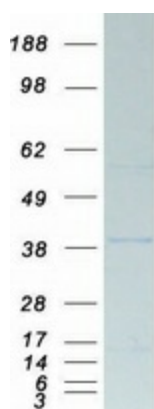
Synonyms: NEDLBA; PP2Ac; PP2CA; PP2Calpha; RP-C

**Summary:** This gene encodes the phosphatase 2A catalytic subunit. Protein phosphatase 2A is one of the four major Ser/Thr phosphatases, and it is implicated in the negative control of cell growth and division. It consists of a common heteromeric core enzyme, which is composed of a catalytic subunit and a constant regulatory subunit, that associates with a variety of regulatory subunits. This gene encodes an alpha isoform of the catalytic subunit. [provided by RefSeq, Jul 2008]

**Protein Families:** Druggable Genome, Phosphatase, Transcription Factors

**Protein Pathways:** Long-term depression, Oocyte meiosis, TGF-beta signaling pathway, Tight junction, Wnt signaling pathway

### Product images:



Coomassie blue staining of purified PPP2CA protein (Cat# TP301334). The protein was produced from HEK293T cells transfected with PPP2CA cDNA clone (Cat# [RC201334]) using MegaTran 2.0 (Cat# [TT210002]).