

Product datasheet for **TP301328M**

SIX2 (NM_016932) Human Recombinant Protein

Product data:

Product Type: Recombinant Proteins

Description: Recombinant protein of human SIX homeobox 2 (SIX2), 100 µg

Species: Human

Expression Host: HEK293T

Expression cDNA Clone or AA Sequence: >RC201328 protein sequence
Red=Cloning site **Green**=Tags(s)

MSMLPTFGFTQEQVACVCEVLQQGGNIERLGRFLWSLPACEHLHKNESVLKAKAWAFHRGNFRELYKIL
ESHQFSPHNHAKLQQLWLVKAHYIEAEKLRGRPLGAVGKYRVRKRFPLPRSIWDGEETSYCFKEKRSVLR
EWYAHNPYPSPREKRELTEATGLTTTQVSNWFKNRRQRDRAAEAKERENNENSNSNSHNPLNGSGKSVLG
SSEDEKTPSGTPDHSSSSPALLLSPPPPGLPSLHSLGHPPGPSAVPVPVPGGGGADPLQHHHGLQDSILN
PMSANLVDLGS

TRTRPLEQKLISEEDLAANDILDYKDDDDKV

Tag: C-Myc/DDK

Predicted MW: 32.1 kDa

Concentration: >0.05 µg/µL as determined by microplate BCA method

Purity: > 80% as determined by SDS-PAGE and Coomassie blue staining

Buffer: 25 mM Tris-HCl, 100 mM glycine, pH 7.3, 10% glycerol

Preparation: Recombinant protein was captured through anti-DDK affinity column followed by conventional chromatography steps.

Note: For testing in cell culture applications, please filter before use. Note that you may experience some loss of protein during the filtration process.

Storage: Store at -80°C.

Stability: Stable for 12 months from the date of receipt of the product under proper storage and handling conditions. Avoid repeated freeze-thaw cycles.

RefSeq: [NP_058628](#)

Locus ID: 10736



[View online »](#)

UniProt ID: [Q9NPC8](#), [Q8TBA2](#)

RefSeq Size: 2178

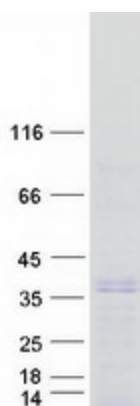
Cytogenetics: 2p21

RefSeq ORF: 873

Summary: This gene is a member of the vertebrate gene family which encode proteins homologous to the Drosophila 'sine oculis' homeobox protein. The encoded protein is a transcription factor which, like other members of this gene family, may be involved in limb or eye development. [provided by RefSeq, Dec 2008]

Protein Families: Transcription Factors

Product images:



Coomassie blue staining of purified SIX2 protein (Cat# [TP301328]). The protein was produced from HEK293T cells transfected with SIX2 cDNA clone (Cat# [RC201328]) using MegaTran 2.0 (Cat# [TT210002]).