

## Product datasheet for **TP301328L**

### **SIX2 (NM\_016932) Human Recombinant Protein**

#### Product data:

Product Type:	Recombinant Proteins
Description:	Recombinant protein of human SIX homeobox 2 (SIX2), 1 mg
Species:	Human
Expression Host:	HEK293T
Expression cDNA Clone or AA Sequence:	>RC201328 protein sequence <b>Red</b> =Cloning site <b>Green</b> =Tags(s)
	MSMLPTFGFTQEQVACVCEVLQQGGNIERLGRFLWSLPACEHLHKNESVLKAKAVVAFHRGNFRELYKIL ESHQFSPHNHAKLQQLWLKAHYIEAEKLRGRPLGAVGKYRVRKFLPRSIWDGEETSYCFKEKSRSVLR EWYAHNPYPSPREKRELTEATGLTTTQVSNWFKNRRQRDRAAEAKERENNENSNSNSHNPLNGSGKSVL G SSEDEKTPSGTPDHSSSSPALLSPPPPGLPSLHSLGHPPGPSAVPVPVPGGGGADPLQHHHGLQDSILN PMSANLVDLGS
	<b>TRTRPLEQKLISEEDLAANDILDYKDDDDKV</b>
Tag:	C-Myc/DDK
Predicted MW:	32.1 kDa
Concentration:	>0.05 µg/µL as determined by microplate BCA method
Purity:	> 80% as determined by SDS-PAGE and Coomassie blue staining
Buffer:	25 mM Tris-HCl, 100 mM glycine, pH 7.3, 10% glycerol
Preparation:	Recombinant protein was captured through anti-DDK affinity column followed by conventional chromatography steps.
Note:	For testing in cell culture applications, please filter before use. Note that you may experience some loss of protein during the filtration process.
Storage:	Store at -80°C.
Stability:	Stable for 12 months from the date of receipt of the product under proper storage and handling conditions. Avoid repeated freeze-thaw cycles.
RefSeq:	<u><a href="#">NP_058628</a></u>
Locus ID:	10736



[View online »](#)

UniProt ID: Q9NPC8

RefSeq Size: 2178

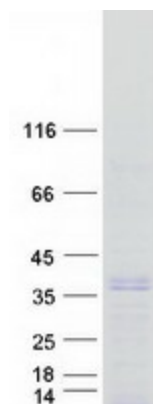
Cytogenetics: 2p21

RefSeq ORF: 873

**Summary:** This gene is a member of the vertebrate gene family which encode proteins homologous to the Drosophila 'sine oculis' homeobox protein. The encoded protein is a transcription factor which, like other members of this gene family, may be involved in limb or eye development. [provided by RefSeq, Dec 2008]

**Protein Families:** Transcription Factors

## Product images:



Coomassie blue staining of purified SIX2 protein (Cat# [TP301328]). The protein was produced from HEK293T cells transfected with SIX2 cDNA clone (Cat# [RC201328]) using MegaTran 2.0 (Cat# [TT210002]).