

Product datasheet for **TP301316M**

C20orf4 (AAR2) (NM_015511) Human Recombinant Protein

Product data:

Product Type:	Recombinant Proteins
Description:	Recombinant protein of human chromosome 20 open reading frame 4 (C20orf4), 100 µg
Species:	Human
Expression Host:	HEK293T
Expression cDNA Clone or AA Sequence:	>RC201316 protein sequence Red =Cloning site Green =Tags(s)

MAAVQMDPELAKRLLFFEGATVVILNMPKGTTEFGIDYNSWEVGPVKFRGVKMIPPGIHFLHYSSVDKANPKE
VGPRMGFFLSLHQGLTVLRWSTLREEVDLSPAPESEVEAMRANLQELDQFLGPYPYATLKKWISLTNFI
SEATVEKLQPENRQICAFSDVLPVLSMKHTKDRVGQNLPRCGIECKSYQEGLARLPPEMKPRAGTEIRFSE
LPTQMFPEGATPAEITKHSMDLSYALETVLNKQFPSSQDVLGELQFAFVCFLGNVYEAFEHWKRLNLN
LCRSEAAAMMKHHTLYINLISILYHQLGEIPADFFVDIVSQDNFLTSTLQVFFSSACSIAVDATLRKKA EK
FQAHLTKKFRWDFAAEPEDCAPVVVELPEGIEMG

TRTRPLEQKLISEEDLAANDILDYKDDDDKV

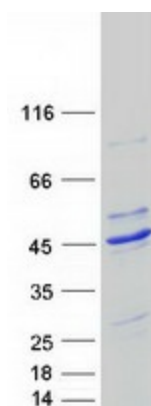
Tag:	C-Myc/DDK
Predicted MW:	43.3 kDa
Concentration:	>0.05 µg/µL as determined by microplate BCA method
Purity:	> 80% as determined by SDS-PAGE and Coomassie blue staining
Buffer:	25 mM Tris-HCl, 100 mM glycine, pH 7.3, 10% glycerol
Preparation:	Recombinant protein was captured through anti-DDK affinity column followed by conventional chromatography steps.
Note:	For testing in cell culture applications, please filter before use. Note that you may experience some loss of protein during the filtration process.
Storage:	Store at -80°C.
Stability:	Stable for 12 months from the date of receipt of the product under proper storage and handling conditions. Avoid repeated freeze-thaw cycles.
RefSeq:	NP_056326
Locus ID:	25980



[View online »](#)

UniProt ID:	Q9Y312
RefSeq Size:	2765
Cytogenetics:	20q11.23
RefSeq ORF:	1152
Synonyms:	C20orf4; CGI-23
Summary:	This gene encodes the homolog of the yeast A1-alpha2 repressin protein that is involved in mRNA splicing. Alternately spliced transcript variants have been found for this gene. [provided by RefSeq, Dec 2012]

Product images:



Coomassie blue staining of purified AAR2 protein (Cat# [TP301316]). The protein was produced from HEK293T cells transfected with AAR2 cDNA clone (Cat# [RC201316]) using MegaTran 2.0 (Cat# [TT210002]).