

## Product datasheet for TP301312

### RTL8A (NM\_001078172) Human Recombinant Protein

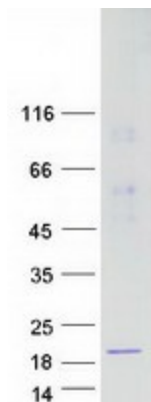
#### Product data:

Product Type:	Recombinant Proteins
Description:	Recombinant protein of human family with sequence similarity 127, member B (FAM127B), transcript variant 1, 20 µg
Species:	Human
Expression Host:	HEK293T
Expression cDNA Clone or AA Sequence:	>RC201312 protein sequence Red=Cloning site Green=Tags(s)
	MDGRVQLMKALLAGPLRPAARRWRNPIPFPEFDGDTDRLPEFIVQTCSYMFVDENTFSNDALKVTFLIT RLTGPALQWVIPYIRKESPLLNDYRGFLAEMKRFGWEEDEF
	TRTRPLEQKLISEEDLAANDILDYKDDDDKV
Tag:	C-Myc/DDK
Predicted MW:	13 kDa
Concentration:	>0.05 µg/µL as determined by microplate BCA method
Purity:	> 80% as determined by SDS-PAGE and Coomassie blue staining
Buffer:	25 mM Tris-HCl, 100 mM glycine, pH 7.3, 10% glycerol
Preparation:	Recombinant protein was captured through anti-DDK affinity column followed by conventional chromatography steps.
Note:	For testing in cell culture applications, please filter before use. Note that you may experience some loss of protein during the filtration process.
Storage:	Store at -80°C.
Stability:	Stable for 12 months from the date of receipt of the product under proper storage and handling conditions. Avoid repeated freeze-thaw cycles.
RefSeq:	<u><a href="#">NP_001071640</a></u>
Locus ID:	26071
UniProt ID:	<u><a href="#">Q9BWD3</a></u>
RefSeq Size:	1275



[View online »](#)

Cytogenetics: Xq26.3  
RefSeq ORF: 339  
Synonyms: CXX1b; FAM127B; MAR8A; SIRH6

**Product images:**

Coomassie blue staining of purified RTL8A protein (Cat# TP301312). The protein was produced from HEK293T cells transfected with RTL8A cDNA clone (Cat# [RC201312]) using MegaTran 2.0 (Cat# [TT210002]).