

Product datasheet for **TP301311L**

TRAPPC6A (NM_024108) Human Recombinant Protein

Product data:

Product Type:	Recombinant Proteins
Description:	Recombinant protein of human trafficking protein particle complex 6A (TRAPPC6A), 1 mg
Species:	Human
Expression Host:	HEK293T
Expression cDNA Clone or AA Sequence:	>RC201311 protein sequence Red =Cloning site Green =Tags(s)
	MADTVLFEFLHTEMVAELWAHDPDPGPVSGAGLRGEEAGATKGQKMSLSVLEGMGFRVGQALGERLPR ET LAFREELDVLFKFLCKDLWVAVFQKQMDSLRTNHQGTIVLQDNSFPLLLPMASGLQYLEEAPKFLAFTCGL LRGALYTLGIESVVTASVAALPVCKFQVVIPKS
	TR TRPLEQKLISEEDLAANDILDYKDDDDKV
Tag:	C-Myc/DDK
Predicted MW:	18.8 kDa
Concentration:	>0.05 µg/µL as determined by microplate BCA method
Purity:	> 80% as determined by SDS-PAGE and Coomassie blue staining
Buffer:	25 mM Tris-HCl, 100 mM glycine, pH 7.3, 10% glycerol
Preparation:	Recombinant protein was captured through anti-DDK affinity column followed by conventional chromatography steps.
Note:	For testing in cell culture applications, please filter before use. Note that you may experience some loss of protein during the filtration process.
Storage:	Store at -80°C.
Stability:	Stable for 12 months from the date of receipt of the product under proper storage and handling conditions. Avoid repeated freeze-thaw cycles.
RefSeq:	<u>NP_077013</u>
Locus ID:	79090
UniProt ID:	<u>O75865</u>



[View online »](#)

RefSeq Size: 838

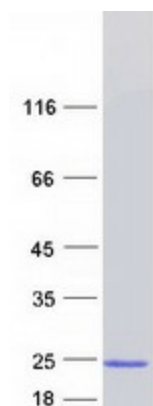
Cytogenetics: 19q13.32

RefSeq ORF: 519

Synonyms: TRS33

Summary: This gene encodes a component of the trafficking protein particle complex, which tethers transport vesicles to the cis-Golgi membrane. Loss of expression of the related gene in mouse affects coat and eye pigmentation, suggesting that the encoded protein may be involved in melanosome biogenesis. Alternatively spliced transcript variants encoding multiple isoforms have been observed for this gene. [provided by RefSeq, Aug 2012]

Product images:



Coomassie blue staining of purified TRAPPC6A protein (Cat# [TP301311]). The protein was produced from HEK293T cells transfected with TRAPPC6A cDNA clone (Cat# [RC201311]) using MegaTran 2.0 (Cat# [TT210002]).