

Product datasheet for **TP301294M**

TFIIF (GTF2F1) (NM_002096) Human Recombinant Protein

Product data:

Product Type:	Recombinant Proteins
Description:	Recombinant protein of human general transcription factor IIF, polypeptide 1, 74kDa (GTF2F1), 100 µg
Species:	Human
Expression Host:	HEK293T
Expression cDNA Clone or AA Sequence:	>RC201294 protein sequence Red =Cloning site Green =Tags(s)

MAALGPSSQNVTEYVVRVPKNTTKKYNIAMAFNAADKVN FATWNQARLERDLSNKKIYQEEEMPESGAGSE
FNRKLR EEAR RKKY GIVLKEFRPEDQPWLLRVNGKSGRKF GIKKGGVTENTSYYIFTQCPDGAFEAFPV
HNWYNFTPLARHRTLAE EAE EEWERRNKVLNHF SIMQRR LK DQDQDEDEEEKEKRGRRKASELR I HDL
EDDLEMSSDASDASGEEGRVPKAKKKAPLAKGGRK KKKKGGSDDEAFEDSDDGDFEGQEVDYMSDGSSS
SQE EPESKAKAPQ QEEGPKGVDEQSDSSE ESE EEPPEEDKE EEEEEKAPT PQEKKRRKDSSEESDSSEE
SDIDSEASSALFMAKKKTPPKRERKPSGGSSRGNSRPGT PSAEGGSTSSTLR AAASKLEQ GKRVSEMPAA
KRLRLDTGPQSLSGKSTPQPPSGK TTPNSGDVQVTEDAVRRYLTRKPM TTKDLLKFKQT KKTGLSSEQTV
NVLAQILKRLNPERKMINDKMHFSLKE

TRTRPLEQKLISEEDLAANDILDYKDDDDKV

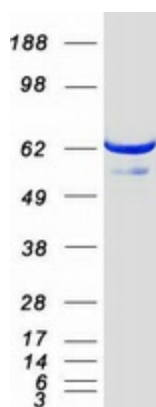
Tag:	C-Myc/DDK
Predicted MW:	58.1 kDa
Concentration:	>0.05 µg/µL as determined by microplate BCA method
Purity:	> 80% as determined by SDS-PAGE and Coomassie blue staining
Buffer:	25 mM Tris-HCl, 100 mM glycine, pH 7.3, 10% glycerol
Preparation:	Recombinant protein was captured through anti-DDK affinity column followed by conventional chromatography steps.
Note:	For testing in cell culture applications, please filter before use. Note that you may experience some loss of protein during the filtration process.
Storage:	Store at -80°C.



[View online »](#)

Stability:	Stable for 12 months from the date of receipt of the product under proper storage and handling conditions. Avoid repeated freeze-thaw cycles.
RefSeq:	NP_002087
Locus ID:	2962
UniProt ID:	P35269
RefSeq Size:	2551
Cytogenetics:	19p13.3
RefSeq ORF:	1551
Synonyms:	BTF4; RAP74; TF2F1; TFIIF
Summary:	TFIIF is a general transcription initiation factor that binds to RNA polymerase II and helps to recruit it to the initiation complex in collaboration with TFIIB. It promotes transcription elongation.[UniProtKB/Swiss-Prot Function]
Protein Families:	Druggable Genome, Transcription Factors
Protein Pathways:	Basal transcription factors

Product images:



Coomassie blue staining of purified GTF2F1 protein (Cat# [TP301294]). The protein was produced from HEK293T cells transfected with GTF2F1 cDNA clone (Cat# [RC201294]) using MegaTran 2.0 (Cat# [TT210002]).