

Product datasheet for **TP301280M**

TUBB6 (NM_032525) Human Recombinant Protein

Product data:

Product Type: Recombinant Proteins

Description: Recombinant protein of human tubulin, beta 6 (TUBB6), 100 µg

Species: Human

Expression Host: HEK293T

**Expression cDNA Clone
or AA Sequence:** >RC201280 protein sequence
Red=Cloning site **Green**=Tags(s)

MREIVHIQAGQCNGNQIGTKFWEVISDEHGIDPAGGYVGDSALQLERINVYYNESSQKYVPRAALVDLEP
GTMDSVRSGPFGQLFRPDNFIFGQTGAGNNWAKGHYTEGAELVDAVLVDVVRKECEHCDCLQGFQLTHSLG
GGTGSGMGTLLISKIREEFDRIMNTFSVMPSPKVSDEVPEYNATLSVHQLVENTDETYCIDNEALYDI
CFRTLKLTPTYGDLNHLVSATMSGVTTSLRFPGQLNADLRKLVNMPFRLHFFMPGFAPLTSRGSQQ
YRALTVPELTQQMFDARNMMAACDPRHGRYLTVATVFRGPMSMKEVDEQMLAIQSKNSSYFVEWIPNNVK
VAVCDIPRGLKMASTFIGNSTAIQELFKRISEQFSAMFRRKAFLHWFTGEGMDEMFEAEASNMDLVS
EYQQYQDATANDGEEAFEDDEEEIDG

TRTRPLEQKLISEEDLAANDILDYKDDDDKV

Tag: C-Myc/DDK

Predicted MW: 49.7 kDa

Concentration: >0.05 µg/µL as determined by microplate BCA method

Purity: > 80% as determined by SDS-PAGE and Coomassie blue staining

Buffer: 25 mM Tris-HCl, 100 mM glycine, pH 7.3, 10% glycerol

Preparation: Recombinant protein was captured through anti-DDK affinity column followed by conventional chromatography steps.

Note: For testing in cell culture applications, please filter before use. Note that you may experience some loss of protein during the filtration process.

Storage: Store at -80°C.

Stability: Stable for 12 months from the date of receipt of the product under proper storage and handling conditions. Avoid repeated freeze-thaw cycles.

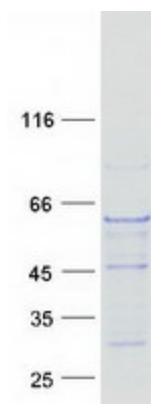
RefSeq: [NP_115914](#)



[View online »](#)

Locus ID:	84617
UniProt ID:	Q9BUF5
RefSeq Size:	1843
Cytogenetics:	18p11.21
RefSeq ORF:	1338
Synonyms:	FPVEPD; HsT1601; TUBB-5
Summary:	Tubulin is the major constituent of microtubules. It binds two moles of GTP, one at an exchangeable site on the beta chain and one at a non-exchangeable site on the alpha chain. [UniProtKB/Swiss-Prot Function]
Protein Families:	Druggable Genome
Protein Pathways:	Gap junction, Pathogenic Escherichia coli infection

Product images:



Coomassie blue staining of purified TUBB6 protein (Cat# [TP301280]). The protein was produced from HEK293T cells transfected with TUBB6 cDNA clone (Cat# [RC201280]) using MegaTran 2.0 (Cat# [TT210002]).