

## Product datasheet for **TP301280L**

### **TUBB6 (NM\_032525) Human Recombinant Protein**

#### **Product data:**

<b>Product Type:</b>	Recombinant Proteins
<b>Description:</b>	Recombinant protein of human tubulin, beta 6 (TUBB6), 1 mg
<b>Species:</b>	Human
<b>Expression Host:</b>	HEK293T
<b>Expression cDNA Clone or AA Sequence:</b>	>RC201280 protein sequence <b>Red</b> =Cloning site <b>Green</b> =Tags(s)

MREIVHIQAGQCGNQIGTKFWEVISDEHGIDPAGGYVGDSALQLERINVYYNESSQKYVPRAALVDLEP  
GTMDSVRSGPFGQLFRPDNFIFGQTGAGNNWAKGHYTEGAELVDAVLVDVVRKECEHCDCLQGFQLTHSLG  
GGTGSGMGTLLISKIREEFDRIMNTFSVMPSPKVSDEVPEYNATLSVHQLVENTDETYCIDNEALYDI  
CFRTLKLTPTYGDLNHLVSATMSGVTTSLRFPQNLADLRKLVNMPFRLHFFMPGFAPLTSRGSQQ  
YRALVPELTQQMFDARNMMAACDPRHGRYLTVATVFRGPMSMKEVDEQMLAIQSKNSSYFVEWIPNNVK  
VAVCDIPRGLKMASTFIGNSTAIQELFKRISEQFSAMFRRKAFLHWFTGEGMDEMFEAEASNMDLVS  
EYQQYQDATANDGEEAFEDDEEEIDG

**TRTRPLEQKLISEEDLAANDILDYKDDDDKV**

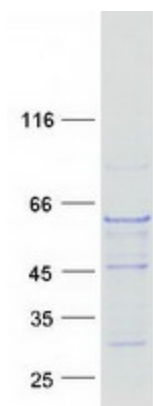
<b>Tag:</b>	C-Myc/DDK
<b>Predicted MW:</b>	49.7 kDa
<b>Concentration:</b>	>0.05 µg/µL as determined by microplate BCA method
<b>Purity:</b>	> 80% as determined by SDS-PAGE and Coomassie blue staining
<b>Buffer:</b>	25 mM Tris-HCl, 100 mM glycine, pH 7.3, 10% glycerol
<b>Preparation:</b>	Recombinant protein was captured through anti-DDK affinity column followed by conventional chromatography steps.
<b>Note:</b>	For testing in cell culture applications, please filter before use. Note that you may experience some loss of protein during the filtration process.
<b>Storage:</b>	Store at -80°C.
<b>Stability:</b>	Stable for 12 months from the date of receipt of the product under proper storage and handling conditions. Avoid repeated freeze-thaw cycles.
<b>RefSeq:</b>	<u><a href="#">NP_115914</a></u>



[View online »](#)

Locus ID:	84617
UniProt ID:	<a href="#">Q9BUF5</a>
RefSeq Size:	1843
Cytogenetics:	18p11.21
RefSeq ORF:	1338
Synonyms:	FPVEPD; HsT1601; TUBB-5
Summary:	Tubulin is the major constituent of microtubules. It binds two moles of GTP, one at an exchangeable site on the beta chain and one at a non-exchangeable site on the alpha chain. [UniProtKB/Swiss-Prot Function]
Protein Families:	Druggable Genome
Protein Pathways:	Gap junction, Pathogenic Escherichia coli infection

### Product images:



Coomassie blue staining of purified TUBB6 protein (Cat# [TP301280]). The protein was produced from HEK293T cells transfected with TUBB6 cDNA clone (Cat# [RC201280]) using MegaTran 2.0 (Cat# [TT210002]).