

Product datasheet for TP301277M

M6PR (NM_002355) Human Recombinant Protein

Product data:

Product Type:	Recombinant Proteins
Description:	Recombinant protein of human mannose-6-phosphate receptor (cation dependent) (M6PR), 100 µg
Species:	Human
Expression Host:	HEK293T
Expression cDNA Clone or AA Sequence:	>RC201277 protein sequence Red =Cloning site Green =Tags(s)
	MFPFYSCWRTGLLLLLLAVAVRESWQTEEKTCDLVGEGKGESEKELALVKRLKPLFNKSFESTVGGQSDT YIYIFRVCREAGNHTSGAGLVQINKSNGKETVVGRLNETHIFNGSNWIMLIYKGGDEYDNHCGKEQRRAV VMISCNRHTLADNFPVSEERGVQDCFYLFEMDSSLACSPESHLSVGSILLVTFASLVAVYVGGFLY QRLVVGAKGMEQFPHLAFWQDLGNLVADGCFVCRSKPRNVPAAYRGVGGDDQLGEESEERDDHLLPM
	TRTRPLEQKLISEEDLAANDILDYKDDDDKV
Tag:	C-Myc/DDK
Predicted MW:	27.9 kDa
Concentration:	>0.05 µg/µL as determined by microplate BCA method
Purity:	> 80% as determined by SDS-PAGE and Coomassie blue staining
Buffer:	25 mM Tris-HCl, 100 mM glycine, pH 7.3, 10% glycerol
Preparation:	Recombinant protein was captured through anti-DDK affinity column followed by conventional chromatography steps.
Note:	For testing in cell culture applications, please filter before use. Note that you may experience some loss of protein during the filtration process.
Storage:	Store at -80°C.
Stability:	Stable for 12 months from the date of receipt of the product under proper storage and handling conditions. Avoid repeated freeze-thaw cycles.
RefSeq:	<u>NP_002346</u>
Locus ID:	4074



[View online »](#)

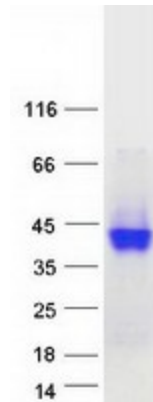
UniProt ID: [P20645](#)
RefSeq Size: 2583
Cytogenetics: 12p13.31
RefSeq ORF: 831
Synonyms: CD-M6PR; CD-MPR; MPR-46; MPR 46; MPR46; SMPR

Summary: This gene encodes a member of the P-type lectin family. P-type lectins play a critical role in lysosome function through the specific transport of mannose-6-phosphate-containing acid hydrolases from the Golgi complex to lysosomes. The encoded protein functions as a homodimer and requires divalent cations for ligand binding. Alternatively spliced transcript variants encoding multiple isoforms have been observed for this gene. A pseudogene of this gene is located on the long arm of chromosome X. [provided by RefSeq, May 2011]

Protein Families: Druggable Genome, Transmembrane

Protein Pathways: Lysosome

Product images:



Coomassie blue staining of purified M6PR protein (Cat# [TP301277]). The protein was produced from HEK293T cells transfected with M6PR cDNA clone (Cat# [RC201277]) using MegaTran 2.0 (Cat# [TT210002]).