

Product datasheet for **TP301258M**

UQCRH (NM_006004) Human Recombinant Protein

Product data:

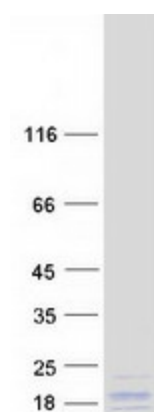
Product Type:	Recombinant Proteins
Description:	Recombinant protein of human ubiquinol-cytochrome c reductase hinge protein (UQCRH), 100 µg
Species:	Human
Expression Host:	HEK293T
Expression cDNA Clone or AA Sequence:	>RC201258 protein sequence Red =Cloning site Green =Tags(s)
	MGLEDEQKMLTESGDPEEEEEEEELVDPLTTVREQCEQLEKCVKARERLELCDERVSSRSHTEDCTEE LFDLHARDHCVAHKLFNNLK
	TRTRPLEQKLISEEDLAANDILDYKDDDDKV
Tag:	C-Myc/DDK
Predicted MW:	10.6 kDa
Concentration:	>0.05 µg/µL as determined by microplate BCA method
Purity:	> 80% as determined by SDS-PAGE and Coomassie blue staining
Buffer:	25 mM Tris-HCl, 100 mM glycine, pH 7.3, 10% glycerol
Preparation:	Recombinant protein was captured through anti-DDK affinity column followed by conventional chromatography steps.
Note:	For testing in cell culture applications, please filter before use. Note that you may experience some loss of protein during the filtration process.
Storage:	Store at -80°C.
Stability:	Stable for 12 months from the date of receipt of the product under proper storage and handling conditions. Avoid repeated freeze-thaw cycles.
RefSeq:	NP_005995
Locus ID:	7388
UniProt ID:	P07919
RefSeq Size:	623



[View online »](#)

Cytogenetics:	1p33
RefSeq ORF:	273
Synonyms:	QCR6; UQCR8
Summary:	This is a component of the ubiquinol-cytochrome c reductase complex (complex III or cytochrome b-c1 complex), which is part of the mitochondrial respiratory chain. This protein may mediate formation of the complex between cytochromes c and c1.[UniProtKB/Swiss-Prot Function]
Protein Families:	Druggable Genome
Protein Pathways:	Alzheimer's disease, Cardiac muscle contraction, Huntington's disease, Metabolic pathways, Oxidative phosphorylation, Parkinson's disease

Product images:



Coomassie blue staining of purified UQCRH protein (Cat# [TP301258]). The protein was produced from HEK293T cells transfected with UQCRH cDNA clone (Cat# [RC201258]) using MegaTran 2.0 (Cat# [TT210002]).