

Product datasheet for TP301251

PSMC5 (NM_002805) Human Recombinant Protein

Product data:

Product Type:	Recombinant Proteins
Description:	Recombinant protein of human proteasome (prosome, macropain) 26S subunit, ATPase, 5 (PSMC5), 20 µg
Species:	Human
Expression Host:	HEK293T
Expression cDNA Clone or AA Sequence:	>RC201251 protein sequence Red =Cloning site Green =Tags(s)
	<p>MALDGPEQMELEEGKAGSGLRQYYLSKIEELQLIVNDKSQNLRRLLQAQRNELNAKVRLREELQLLQEQG SYVGEVVRAMDKKKVLVKVHPEGKFVVDVDKNIDINDVTPNCRVALRNDSTYTLHKILPNKVDPLVSLMMV EKVPDSTYEMIGGLDKQIKEIKEVIELPVKHPELFEALGIAQPKGVLGPPGTGKTLARAVAHHTDCT FIRVSGSELVQKFIGEGARMVRELFVMAREHAPSIIFMDEIDSIGSSRLEGGSGGDSEVQRTMLELLNQL DGFEATKNIKVIMATNRIDILDSALLRPGRIDRKIEFPPNNEEARLDILKIHSRKMNLTRGINLRKIAEL MPGASGAEVKGVCTEAGMYALRERRRVHVTQEDFEMAVAKVMQKDSEKNMSIKKLWK</p> <p>TRTRPLEQKLISEEDLAANDILDYKDDDDKV</p>
Tag:	C-Myc/DDK
Predicted MW:	45.4 kDa
Concentration:	>0.05 µg/µL as determined by microplate BCA method
Purity:	> 80% as determined by SDS-PAGE and Coomassie blue staining
Buffer:	25 mM Tris-HCl, 100 mM glycine, pH 7.3, 10% glycerol
Preparation:	Recombinant protein was captured through anti-DDK affinity column followed by conventional chromatography steps.
Note:	For testing in cell culture applications, please filter before use. Note that you may experience some loss of protein during the filtration process.
Storage:	Store at -80°C.
Stability:	Stable for 12 months from the date of receipt of the product under proper storage and handling conditions. Avoid repeated freeze-thaw cycles.
RefSeq:	<u>NP_002796</u>



[View online »](#)

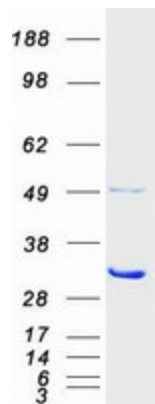
Locus ID:	5705
UniProt ID:	P62195
RefSeq Size:	1372
Cytogenetics:	17q23.3
RefSeq ORF:	1218
Synonyms:	p45; p45/SUG; RPT6; S8; SUG-1; SUG1; TBP10; TRIP1

Summary: The 26S proteasome is a multicatalytic proteinase complex with a highly ordered structure composed of 2 complexes, a 20S core and a 19S regulator. The 20S core is composed of 4 rings of 28 non-identical subunits; 2 rings are composed of 7 alpha subunits and 2 rings are composed of 7 beta subunits. The 19S regulator is composed of a base, which contains 6 ATPase subunits and 2 non-ATPase subunits, and a lid, which contains up to 10 non-ATPase subunits. Proteasomes are distributed throughout eukaryotic cells at a high concentration and cleave peptides in an ATP/ubiquitin-dependent process in a non-lysosomal pathway. An essential function of a modified proteasome, the immunoproteasome, is the processing of class I MHC peptides. This gene encodes one of the ATPase subunits, a member of the triple-A family of ATPases which have a chaperone-like activity. In addition to participation in proteasome functions, this subunit may participate in transcriptional regulation since it has been shown to interact with the thyroid hormone receptor and retinoid X receptor-alpha. Two transcript variants encoding different isoforms have been found for this gene. [provided by RefSeq, Nov 2010]

Protein Families: Druggable Genome

Protein Pathways: Proteasome

Product images:



Coomassie blue staining of purified PSMC5 protein (Cat# TP301251). The protein was produced from HEK293T cells transfected with PSMC5 cDNA clone (Cat# [RC201251]) using MegaTran 2.0 (Cat# [TT210002]).