

Product datasheet for TP301235L

ISG15 (NM_005101) Human Recombinant Protein

Product data:

Product Type: Recombinant Proteins

Description: Recombinant protein of human ISG15 ubiquitin-like modifier (ISG15), 1 mg

Species: Human

Expression Host: HEK293T

**Expression cDNA Clone
or AA Sequence:** >RC201235 protein sequence
Red=Cloning site **Green**=Tags(s)

MGWDLTVKMLAGNEFQVSLSSSMSVSELKAQITQKIGVHAFQQLAVHPSGVALQDRVPLASQGLGPGST
VLLVWDKCDEPLNILVRNKNKGRSSTYEVRLTQTV AHLKQQVSGLEGVQDDLFWLTFEGKPLEDQLPLGEY
GLKPLSTVFMNLRRLRGGGTEPGGRS

TRTRPLEQKLISEEDLAANDILDYKDDDDKV

Tag: C-Myc/DDK

Predicted MW: 17.7 kDa

Concentration: >0.05 µg/µL as determined by microplate BCA method

Purity: > 80% as determined by SDS-PAGE and Coomassie blue staining

Buffer: 25 mM Tris-HCl, 100 mM glycine, pH 7.3, 10% glycerol

Preparation: Recombinant protein was captured through anti-DDK affinity column followed by conventional chromatography steps.

Note: For testing in cell culture applications, please filter before use. Note that you may experience some loss of protein during the filtration process.

Storage: Store at -80°C.

Stability: Stable for 12 months from the date of receipt of the product under proper storage and handling conditions. Avoid repeated freeze-thaw cycles.

RefSeq: [NP_005092](#)

Locus ID: 9636

UniProt ID: [P05161](#)

RefSeq Size: 685



[View online »](#)

Cytogenetics: 1p36.33

RefSeq ORF: 495

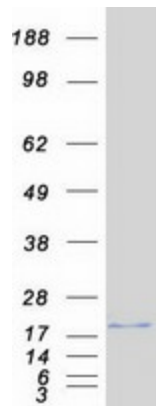
Synonyms: G1P2; hUCRP; IFI15; IMD38; IP17; UCRP

Summary: The protein encoded by this gene is a ubiquitin-like protein that is conjugated to intracellular target proteins upon activation by interferon-alpha and interferon-beta. Several functions have been ascribed to the encoded protein, including chemotactic activity towards neutrophils, direction of ligated target proteins to intermediate filaments, cell-to-cell signaling, and antiviral activity during viral infections. While conjugates of this protein have been found to be noncovalently attached to intermediate filaments, this protein is sometimes secreted. [provided by RefSeq, Dec 2012]

Protein Families: Druggable Genome, Secreted Protein

Protein Pathways: RIG-I-like receptor signaling pathway

Product images:



Coomassie blue staining of purified ISG15 protein (Cat# [TP301235]). The protein was produced from HEK293T cells transfected with ISG15 cDNA clone (Cat# [RC201235]) using MegaTran 2.0 (Cat# [TT210002]).