

Product datasheet for TP301233M

NCF1 (NM_000265) Human Recombinant Protein

Product data:

Product Type:	Recombinant Proteins
Description:	Recombinant protein of human neutrophil cytosolic factor 1 (NCF1), 100 µg
Species:	Human
Expression Host:	HEK293T
Expression cDNA Clone or AA Sequence:	>RC201233 representing NM_000265 Red =Cloning site Green =Tags(s)
	<p>MGDTFIRHIALLGFEKRFVPSQHYVYMFLVKWQDLSEKVVYRRFTEIYEFHKTLKEMFPIEAGAINPENR IIPHLPAKWFQDQRAAENRQGLTEYCSTLMSLPTKISRCPHLLDFFKVRPDDLKLPDNTQKKPETYL MPKDGKSTATDITGPIILQTYRAIANYEKTSGSEMALSTGDVVEVVEKSESQWWFCQMKAKRGWIPASFL EPLDSPDETEDPEPNYAGEPYVAIKAYTAVEGDEVSLLEGEAVEVIHKLLDGGWWWVIRKDDVTGYFPSMYL QKSGQDVSQAQRQIKRGAPRRSSIRNAHSIHQRSRKRLSQDAYRRNSVRFLQRRRRQARPGPQSPGSPL EEERQTQRSKPQPAVPPRPSADLILNRCSESTKRKLASPV</p> <p>TRTRPLEQKLISEEDLAANDILDYKDDDDKV</p>
Tag:	C-Myc/DDK
Predicted MW:	44.5 kDa
Concentration:	>0.05 µg/µL as determined by microplate BCA method
Purity:	> 80% as determined by SDS-PAGE and Coomassie blue staining
Buffer:	25 mM Tris-HCl, 100 mM glycine, pH 7.3, 10% glycerol
Bioactivity:	Enzyme substrate (PMID: 29195919)
Preparation:	Recombinant protein was captured through anti-DDK affinity column followed by conventional chromatography steps.
Note:	For testing in cell culture applications, please filter before use. Note that you may experience some loss of protein during the filtration process.
Storage:	Store at -80°C.
Stability:	Stable for 12 months from the date of receipt of the product under proper storage and handling conditions. Avoid repeated freeze-thaw cycles.
RefSeq:	NP_000256



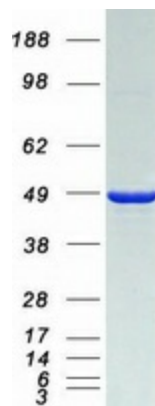
[View online »](#)

Locus ID: 653361
UniProt ID: [P14598](#)
RefSeq Size: 1409
Cytogenetics: 7q11.23
RefSeq ORF: 1170
Synonyms: CGD1; NCF1A; NOXO2; p47phox; SH3PXD1A

Summary: The protein encoded by this gene is a 47 kDa cytosolic subunit of neutrophil NADPH oxidase. This oxidase is a multicomponent enzyme that is activated to produce superoxide anion. Mutations in this gene have been associated with chronic granulomatous disease. [provided by RefSeq, Jul 2008]

Protein Pathways: Chemokine signaling pathway, Fc gamma R-mediated phagocytosis, Leukocyte transendothelial migration, Pathogenic Escherichia coli infection, Regulation of actin cytoskeleton

Product images:



Coomassie blue staining of purified NCF1 protein (Cat# [TP301233]). The protein was produced from HEK293T cells transfected with NCF1 cDNA clone (Cat# [RC201233]) using MegaTran 2.0 (Cat# [TT210002]).