

Product datasheet for **TP301223M**

HIGD2A (NM_138820) Human Recombinant Protein

Product data:

Product Type:	Recombinant Proteins
Description:	Recombinant protein of human HIG1 hypoxia inducible domain family, member 2A (HIGD2A), 100 µg
Species:	Human
Expression Host:	HEK293T
Expression cDNA Clone or AA Sequence:	>RC201223 protein sequence Red =Cloning site Green =Tags(s) MATPGPVIPEVPFEPSPKPPVIEGLSPTVYRNPESEFKEKFVRKTRENPVWPIGCLATAAAALTYGLYSFHRG NSQRSQLMMRTRIAAQGFTVAAILLGLAVTAMKSRP TRTRPLEQKLISEEDLAANDILDYKDDDDKV
Tag:	C-Myc/DDK
Predicted MW:	11.3 kDa
Concentration:	>0.05 µg/µL as determined by microplate BCA method
Purity:	> 80% as determined by SDS-PAGE and Coomassie blue staining
Buffer:	25 mM Tris-HCl, 100 mM glycine, pH 7.3, 10% glycerol
Preparation:	Recombinant protein was captured through anti-DDK affinity column followed by conventional chromatography steps.
Note:	For testing in cell culture applications, please filter before use. Note that you may experience some loss of protein during the filtration process.
Storage:	Store at -80°C.
Stability:	Stable for 12 months from the date of receipt of the product under proper storage and handling conditions. Avoid repeated freeze-thaw cycles.
RefSeq:	<u>NP_620175</u>
Locus ID:	192286
UniProt ID:	<u>Q9BW72</u>
RefSeq Size:	628


[View online »](#)

Cytogenetics: 5q35.2

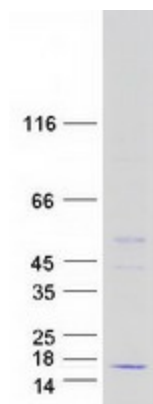
RefSeq ORF: 318

Synonyms: RCF1b

Summary: The protein encoded by this gene is a subunit of the cytochrome c oxidase complex (complex IV), which is the terminal enzyme in the mitochondrial respiratory chain. The encoded protein is an inner mitochondrial membrane protein and is a functional ortholog of the yeast respiratory supercomplex factor 1 (Rcf1). In mouse, the orthologous protein enhances cell survival under conditions of hypoxia. [provided by RefSeq, Sep 2016]

Protein Families: Transmembrane

Product images:



Coomassie blue staining of purified HIGD2A protein (Cat# [TP301223]). The protein was produced from HEK293T cells transfected with HIGD2A cDNA clone (Cat# [RC201223]) using MegaTran 2.0 (Cat# [TT210002]).