

Product datasheet for **TP301217**

CRIP1 (NM_001311) Human Recombinant Protein

Product data:

Product Type:	Recombinant Proteins
Description:	Recombinant protein of human cysteine-rich protein 1 (intestinal) (CRIP1), 20 µg
Species:	Human
Expression Host:	HEK293T
Expression cDNA Clone or AA Sequence:	>RC201217 protein sequence Red =Cloning site Green =Tags(s)
	MPKCPKCNKEVYFAERVTSLGKDWHRPCLKCEKCGKTLTSGGHAHEGKPYCNHPCYAAMFGPKGFGRGG AESHTFK
	TRTRPLEQKLISEEDLAANDILDYKDDDDKV
Tag:	C-Myc/DDK
Predicted MW:	8.4 kDa
Concentration:	>0.05 µg/µL as determined by microplate BCA method
Purity:	> 80% as determined by SDS-PAGE and Coomassie blue staining
Buffer:	25 mM Tris-HCl, 100 mM glycine, pH 7.3, 10% glycerol
Preparation:	Recombinant protein was captured through anti-DDK affinity column followed by conventional chromatography steps.
Note:	For testing in cell culture applications, please filter before use. Note that you may experience some loss of protein during the filtration process.
Storage:	Store at -80°C.
Stability:	Stable for 12 months from the date of receipt of the product under proper storage and handling conditions. Avoid repeated freeze-thaw cycles.
RefSeq:	NP_001302
Locus ID:	1396
UniProt ID:	P50238
RefSeq Size:	480
Cytogenetics:	14q32.33



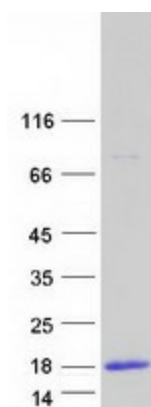
[View online »](#)

RefSeq ORF: 231

Synonyms: CRHP; CRIP; CRP-1; CRP1

Summary: Cysteine-rich intestinal protein (CRIP) belongs to the LIM/double zinc finger protein family, members of which include cysteine- and glycine-rich protein-1 (CSRP1; MIM 123876), rhombotin-1 (RBTN1; MIM 186921), rhombotin-2 (RBTN2; MIM 180385), and rhombotin-3 (RBTN3; MIM 180386). CRIP may be involved in intestinal zinc transport (Hempe and Cousins, 1991 [PubMed 1946385]).[supplied by OMIM, Mar 2008]

Product images:



Coomassie blue staining of purified CRIP1 protein (Cat# TP301217). The protein was produced from HEK293T cells transfected with CRIP1 cDNA clone (Cat# [RC201217]) using MegaTran 2.0 (Cat# [TT210002]).