

Product datasheet for TP301203L

S100 alpha 2 (S100A2) (NM_005978) Human Recombinant Protein

Product data:

| | |
|---------------------------------------|--|
| Product Type: | Recombinant Proteins |
| Description: | Recombinant protein of human S100 calcium binding protein A2 (S100A2), 1 mg |
| Species: | Human |
| Expression Host: | HEK293T |
| Expression cDNA Clone or AA Sequence: | >RC201203 protein sequence Red =Cloning site Green =Tags(s) |
| | MMCSSLEQALAVLVTTFFHKYSCQEGDKFKLSKGEMKELLHKELPSFVGEKVDEEGLKCLMGSLDENSDDQQ VDFQEYAVFLALITVMCNDFQGCPRP |
| | TRTRPLEQKLISEEDLAANDILDYKDDDDKV |
| Tag: | C-Myc/DDK |
| Predicted MW: | 10.8 kDa |
| Concentration: | >0.05 µg/µL as determined by microplate BCA method |
| Purity: | > 80% as determined by SDS-PAGE and Coomassie blue staining |
| Buffer: | 25 mM Tris-HCl, 100 mM glycine, pH 7.3, 10% glycerol |
| Preparation: | Recombinant protein was captured through anti-DDK affinity column followed by conventional chromatography steps. |
| Note: | For testing in cell culture applications, please filter before use. Note that you may experience some loss of protein during the filtration process. |
| Storage: | Store at -80°C. |
| Stability: | Stable for 12 months from the date of receipt of the product under proper storage and handling conditions. Avoid repeated freeze-thaw cycles. |
| RefSeq: | NP_005969 |
| Locus ID: | 6273 |
| UniProt ID: | P29034 , A0A590UJ49 |
| RefSeq Size: | 970 |
| Cytogenetics: | 1q21.3 |



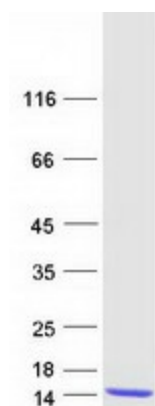
[View online »](#)

RefSeq ORF: 297

Synonyms: CAN19; S100L

Summary: The protein encoded by this gene is a member of the S100 family of proteins containing 2 EF-hand calcium-binding motifs. S100 proteins are localized in the cytoplasm and/or nucleus of a wide range of cells, and involved in the regulation of a number of cellular processes such as cell cycle progression and differentiation. S100 genes include at least 13 members which are located as a cluster on chromosome 1q21. This protein may have a tumor suppressor function. Chromosomal rearrangements and altered expression of this gene have been implicated in breast cancer. [provided by RefSeq, Jul 2008]

Product images:



Coomassie blue staining of purified S100A2 protein (Cat# [TP301203]). The protein was produced from HEK293T cells transfected with S100A2 cDNA clone (Cat# [RC201203]) using MegaTran 2.0 (Cat# [TT210002]).