

Product datasheet for TP301203

S100 alpha 2 (S100A2) (NM_005978) Human Recombinant Protein

Product data:

Product Type:	Recombinant Proteins
Description:	Recombinant protein of human S100 calcium binding protein A2 (S100A2), 20 µg
Species:	Human
Expression Host:	HEK293T
Expression cDNA Clone or AA Sequence:	>RC201203 protein sequence Red =Cloning site Green =Tags(s) MMCSSLEQALAVLVTTFHKYSCQEGDKFKLSKGEMKELLHKELPSFVGEKVDEEGLKKLMGSLDENSDDQQ VDFQEYAVFLALITVMCNDFQGPCDRP TR TRPLEQKLISEEDLAANDILDYKDDDDKV
Tag:	C-Myc/DDK
Predicted MW:	10.8 kDa
Concentration:	>0.05 µg/µL as determined by microplate BCA method
Purity:	> 80% as determined by SDS-PAGE and Coomassie blue staining
Buffer:	25 mM Tris-HCl, 100 mM glycine, pH 7.3, 10% glycerol
Preparation:	Recombinant protein was captured through anti-DDK affinity column followed by conventional chromatography steps.
Note:	For testing in cell culture applications, please filter before use. Note that you may experience some loss of protein during the filtration process.
Storage:	Store at -80°C.
Stability:	Stable for 12 months from the date of receipt of the product under proper storage and handling conditions. Avoid repeated freeze-thaw cycles.
RefSeq:	NP_005969
Locus ID:	6273
UniProt ID:	P29034 , A0A590UJ49
RefSeq Size:	970
Cytogenetics:	1q21.3

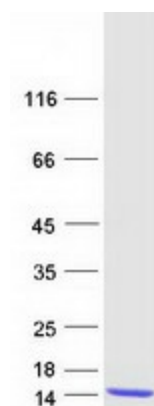

[View online »](#)

RefSeq ORF: 297

Synonyms: CAN19; S100L

Summary: The protein encoded by this gene is a member of the S100 family of proteins containing 2 EF-hand calcium-binding motifs. S100 proteins are localized in the cytoplasm and/or nucleus of a wide range of cells, and involved in the regulation of a number of cellular processes such as cell cycle progression and differentiation. S100 genes include at least 13 members which are located as a cluster on chromosome 1q21. This protein may have a tumor suppressor function. Chromosomal rearrangements and altered expression of this gene have been implicated in breast cancer. [provided by RefSeq, Jul 2008]

Product images:



Coomassie blue staining of purified S100A2 protein (Cat# TP301203). The protein was produced from HEK293T cells transfected with S100A2 cDNA clone (Cat# [RC201203]) using MegaTran 2.0 (Cat# [TT210002]).