

Product datasheet for TP301201

PSMD11 (NM_002815) Human Recombinant Protein

Product data:

Product Type:	Recombinant Proteins
Description:	Recombinant protein of human proteasome (prosome, macropain) 26S subunit, non-ATPase, 11 (PSMD11), 20 µg
Species:	Human
Expression Host:	HEK293T
Expression cDNA Clone or AA Sequence:	>RC201201 representing NM_002815 Red =Cloning site Green =Tags(s)

MAAAAVVEFQRAQSLSTDREASIDILHSIVKRDIQENDEEAVQVKEQSILELGSLLAKTGQAAELGGLL
KYVRPFLNSISKAKAARLVRSLDLFLDMEAATGQEVCLCEIEWAKSEKRTFLRQALEARLVSLYFDT
KRYQEALHLGSQLLRELKKMDDKALLVEVQLLESKTYHALSNLPKARAALTSARTTANAIYCPPKLQATL
DMQSGIIHAAEEKDWKTAYSIFYEAFEGYDSIDSPKAITSLKYMILLCKIMLNTPEDVQALVSGKLALRYA
GRQTEALKCVAQASKNRSLADFEKALTDYRAELRDDPIISTHLAKLYDNLLEQNLIRVIEPFSRVQIEHI
SSLIKLSKADVERKLSQMILDKKFHGGILDQEGEVLIIFDEPPVDKTYEAALETIQNMSKVVDLSLYNKAKK
LT

TRTRPLEQKLISEEDLAANDILDYKDDDDKV

Tag:	C-Myc/DDK
Predicted MW:	47.3 kDa
Concentration:	>0.05 µg/µL as determined by microplate BCA method
Purity:	> 80% as determined by SDS-PAGE and Coomassie blue staining
Buffer:	25 mM Tris-HCl, 100 mM glycine, pH 7.3, 10% glycerol
Preparation:	Recombinant protein was captured through anti-DDK affinity column followed by conventional chromatography steps.
Note:	For testing in cell culture applications, please filter before use. Note that you may experience some loss of protein during the filtration process.
Storage:	Store at -80°C.
Stability:	Stable for 12 months from the date of receipt of the product under proper storage and handling conditions. Avoid repeated freeze-thaw cycles.



[View online >](#)

RefSeq: [NP_002806](#)

Locus ID: 5717

UniProt ID: [O00231](#)

RefSeq Size: 1598

Cytogenetics: 17q11.2

RefSeq ORF: 1266

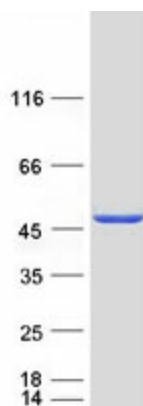
Synonyms: p44.5; Rpn6; S9

Summary: The 26S proteasome is a multicatalytic proteinase complex with a highly ordered structure composed of 2 complexes, a 20S core and a 19S regulator. The 20S core is composed of 4 rings of 28 non-identical subunits; 2 rings are composed of 7 alpha subunits and 2 rings are composed of 7 beta subunits. The 19S regulator is composed of a base, which contains 6 ATPase subunits and 2 non-ATPase subunits, and a lid, which contains up to 10 non-ATPase subunits. Proteasomes are distributed throughout eukaryotic cells at a high concentration and cleave peptides in an ATP/ubiquitin-dependent process in a non-lysosomal pathway. This gene encodes a member of the proteasome subunit S9 family that functions as a non-ATPase subunit of the 19S regulator and is phosphorylated by AMP-activated protein kinase. Alternatively spliced transcript variants have been observed for this gene. [provided by RefSeq, Jul 2012]

Protein Families: Stem cell - Pluripotency

Protein Pathways: Proteasome

Product images:



Coomassie blue staining of purified PSMD11 protein (Cat# TP301201). The protein was produced from HEK293T cells transfected with PSMD11 cDNA clone (Cat# [RC201201]) using MegaTran 2.0 (Cat# [TT210002]).