

## Product datasheet for **TP301200**

### Cip4 (TRIP10) (NM\_004240) Human Recombinant Protein

#### Product data:

**Product Type:** Recombinant Proteins

**Description:** Recombinant protein of human thyroid hormone receptor interactor 10 (TRIP10), 20 µg

**Species:** Human

**Expression Host:** HEK293T

**Expression cDNA Clone  
or AA Sequence:** >RC201200 protein sequence  
**Red**=Cloning site **Green**=Tags(s)

MDWGTTELWDQFEVLERHTQWGLDLLDRYVKFKERTEVEQAYAKQLRSLVKKYLPKRPAKDDPESKFSQQ  
QSFVQILQEVNDFAGQRELVAENLSVRVCELELTKYSQEMKQERKMHFQEGRRAQQQLNENFKQLENSKRK  
FERDCREAEKAAQTAERLDQDINATKADVEKAKQQAHLRSHMAEESKNEYAAQLQRFNRDQAHFYFSQMP  
QIFDKLQDMDERRATRLGAGYGLLSEAELEVPIIAKCLEGMKVAANAVDPKNDSHVLIELHKSGFARPG  
DVEFEDFSQPMNRAPSDSSLGTPSDGRPELRGPRSRTRKRWPFGKKNKTVTDFSHLPPEQQRKRLQQQ  
LEERSRELQKEVDQREALKKMKDVYEKTPQMGDPASLEPQIAETLSNIERLKLKLEVQKYEAWLAEASRVL  
SNRGDSLRSRHRPPDPPASAPPDSSNSASQDTKESSEPPSEESQDTPIYTEFDEDFEEETSPIGHCV  
AIYHFEGSSEGTISMAEGEDLSLMEEDKGDGWTRVRRKEGGEGYVPTSYLRVTLN

**TRTRPLEQKLISEEDLAANDILDYKDDDDKV**

**Tag:** C-Myc/DDK

**Predicted MW:** 62.4 kDa

**Concentration:** >0.05 µg/µL as determined by microplate BCA method

**Purity:** > 80% as determined by SDS-PAGE and Coomassie blue staining

**Buffer:** 25 mM Tris-HCl, 100 mM glycine, pH 7.3, 10% glycerol

**Preparation:** Recombinant protein was captured through anti-DDK affinity column followed by conventional chromatography steps.

**Note:** For testing in cell culture applications, please filter before use. Note that you may experience some loss of protein during the filtration process.

**Storage:** Store at -80°C.

**Stability:** Stable for 12 months from the date of receipt of the product under proper storage and handling conditions. Avoid repeated freeze-thaw cycles.



[View online >](#)

RefSeq: [NP\\_004231](#)

Locus ID: 9322

UniProt ID: [Q15642](#)

RefSeq Size: 2033

Cytogenetics: 19p13.3

RefSeq ORF: 1635

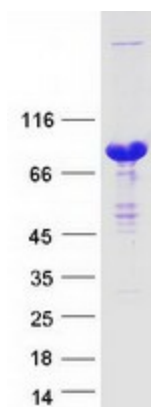
Synonyms: CIP4; HSTP; STOT; STP; TRIP-10

**Summary:** Required for translocation of GLUT4 to the plasma membrane in response to insulin signaling (By similarity). Required to coordinate membrane tubulation with reorganization of the actin cytoskeleton during endocytosis. Binds to lipids such as phosphatidylinositol 4,5-bisphosphate and phosphatidylserine and promotes membrane invagination and the formation of tubules. Also promotes CDC42-induced actin polymerization by recruiting WASL/N-WASP which in turn activates the Arp2/3 complex. Actin polymerization may promote the fission of membrane tubules to form endocytic vesicles. Required for the formation of podosomes, actin-rich adhesion structures specific to monocyte-derived cells. May be required for the lysosomal retention of FASLG/FASL.[UniProtKB/Swiss-Prot Function]

**Protein Families:** Druggable Genome

**Protein Pathways:** Insulin signaling pathway

### Product images:



Coomassie blue staining of purified TRIP10 protein (Cat# TP301200). The protein was produced from HEK293T cells transfected with TRIP10 cDNA clone (Cat# [RC201200]) using MegaTran 2.0 (Cat# [TT210002]).