

Product datasheet for TP301195

BCS1L (NM_004328) Human Recombinant Protein

Product data:

Product Type:	Recombinant Proteins
Description:	Recombinant protein of human BCS1-like (yeast) (BCS1L), transcript variant 1, 20 µg
Species:	Human
Expression Host:	HEK293T
Expression cDNA Clone or AA Sequence:	>RC201195 protein sequence Red=Cloning site Green=Tags(s)

MPLSDFILALKDNPYFGAGFGLVGVGTALALARKGVQLGLVAFRRRHVMITLEVPARDRSYAWLLSWLTRH
STRTQHLSVETSYLQHESGRISTKFEFVPSPGNHFIWYRGKWIRVERSREMQMIDLQTGTPWESVTFTAL
GTDKRVFFNILEEARELALQEEGKTVMYTAVGSEWRPFGYPRRRRPLNSVVLQQLADRIVRDVQEFID
NPKWYTDGIPYRRGYLLYGGPGCGKSSFITALAGELEHSICLLSLTSSSLSDRLNHLLSVAPQQSLVL
LEDVDAAFLSRDLAVENPVKYQGLGRLTFSGLLNALDGVASTEARIVFMTTNHVDRLDPALIRPGRVDLK
EYVGYCSHWQLTQMFQRFYPGQAPSLAENFAEHVLRATNQISPAQVQGYFMLYKNDPVGAIHNAESLRR

TRTRPLEQKLISEEDLAANDILDYKDDDDKV

Tag:	C-Myc/DDK
Predicted MW:	47.4 kDa
Concentration:	>0.05 µg/µL as determined by microplate BCA method
Purity:	> 80% as determined by SDS-PAGE and Coomassie blue staining
Buffer:	25 mM Tris-HCl, 100 mM glycine, pH 7.3, 10% glycerol
Preparation:	Recombinant protein was captured through anti-DDK affinity column followed by conventional chromatography steps.
Note:	For testing in cell culture applications, please filter before use. Note that you may experience some loss of protein during the filtration process.
Storage:	Store at -80°C.
Stability:	Stable for 12 months from the date of receipt of the product under proper storage and handling conditions. Avoid repeated freeze-thaw cycles.
RefSeq:	<u>NP_004319</u>
Locus ID:	617



[View online »](#)

UniProt ID: [Q9Y276](#), [A0A024R445](#)

RefSeq Size: 1663

Cytogenetics: 2q35

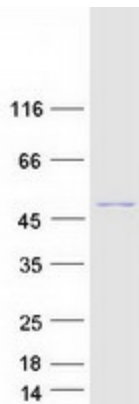
RefSeq ORF: 1257

Synonyms: BCS; BCS1; BJS; FLNMS; GRACILE; h-BCS; h-BCS1; Hs.6719; MC3DN1; PTD

Summary: This gene encodes a homolog of the *S. cerevisiae* bcs1 protein which is involved in the assembly of complex III of the mitochondrial respiratory chain. The encoded protein does not contain a mitochondrial targeting sequence but experimental studies confirm that it is imported into mitochondria. Mutations in this gene are associated with mitochondrial complex III deficiency and the GRACILE syndrome. Several alternatively spliced transcripts encoding two different isoforms have been described. [provided by RefSeq, Jan 2016]

Protein Families: Druggable Genome

Product images:



Coomassie blue staining of purified BCS1L protein (Cat# TP301195). The protein was produced from HEK293T cells transfected with BCS1L cDNA clone (Cat# [RC201195]) using MegaTran 2.0 (Cat# [TT210002]).