

Product datasheet for **TP301194L**

GET3 (NM_004317) Human Recombinant Protein

Product data:

Product Type:	Recombinant Proteins
Description:	Recombinant protein of human arsA arsenite transporter, ATP-binding, homolog 1 (bacterial) (ASNA1), 1 mg
Species:	Human
Expression Host:	HEK293T
Expression cDNA Clone or AA Sequence:	>RC201194 protein sequence Red =Cloning site Green =Tags(s)

MAAGVAGWGVEAEFEEDAPDVEPLEPTLSNIIQRSLKWIFVGGKGGVGGKTTCSCLAVQLSKGRESVLI
ISTDPAHNISDAFDQKFSKVPTKVKGYDNLFAMEIDPSLGVAELPDEFFEDNMLSMGKKMMQEAMSAFP
GIDEAMSYAEVMRLVKGMNFSVWFDTAPTGHTRLNLFPTIVERGLGRMLQIKNQISPFISQMCNMLGL
GDMNADQLASKLEETLPVIRSVSEQFKDPEQTTFCVIAEFLSLYETERLIQELAKCKIDTHNIIVNQL
VFPDPEKPKMCEARHKIQAKYLDQMEDLYEDFHIVKLP LLPHEVRGADKVNTFSALLLEPYKPPSAQ

TRTRPLEQKLISEEDLAANDILDYKDDDDKV

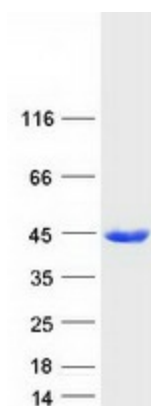
Tag:	C-Myc/DDK
Predicted MW:	38.6 kDa
Concentration:	>0.05 µg/µL as determined by microplate BCA method
Purity:	> 80% as determined by SDS-PAGE and Coomassie blue staining
Buffer:	25 mM Tris-HCl, 100 mM glycine, pH 7.3, 10% glycerol
Preparation:	Recombinant protein was captured through anti-DDK affinity column followed by conventional chromatography steps.
Note:	For testing in cell culture applications, please filter before use. Note that you may experience some loss of protein during the filtration process.
Storage:	Store at -80°C.
Stability:	Stable for 12 months from the date of receipt of the product under proper storage and handling conditions. Avoid repeated freeze-thaw cycles.
RefSeq:	NP_004308
Locus ID:	439



[View online »](#)

UniProt ID:	O43681
RefSeq Size:	1298
Cytogenetics:	19p13.13
RefSeq ORF:	1044
Synonyms:	ARSA-I; ARSA1; ASNA-I; ASNA1; TRC40
Summary:	<p>This gene represents the human homolog of the bacterial <i>arsA</i> gene, encoding the arsenite-stimulated ATPase component of the arsenite transporter responsible for resistance to arsenicals. This protein is also a central component of a transmembrane domain (TMD) recognition complex (TRC) that is involved in the post-translational delivery of tail-anchored (TA) proteins from the cytosol to the endoplasmic reticulum (ER). It recognizes and selectively binds the TMD of TA proteins in the cytosol, and delivers them to the ER for insertion. [provided by RefSeq, Oct 2011]</p>

Product images:



Coomassie blue staining of purified GET3 protein (Cat# [TP301194]). The protein was produced from HEK293T cells transfected with GET3 cDNA clone (Cat# [RC201194]) using MegaTran 2.0 (Cat# [TT210002]).