

Product datasheet for **TP301193M**

Perilipin 3 (PLIN3) (NM_005817) Human Recombinant Protein

Product data:

Product Type:	Recombinant Proteins
Description:	Recombinant protein of human mannose-6-phosphate receptor binding protein 1 (M6PRBP1), 100 µg
Species:	Human
Expression Host:	HEK293T
Expression cDNA	>RC201193 representing NM_005817
Clone or AA Sequence:	Red=Cloning site Green=Tags(s)

MSADGAEADGSTQVTVEEPVQQPSVVDVASMPLISSTCDMVSAAYASTKESYPHIKTVCDAAEKGVRTL
TAAAVSGAQPILSKLEPQIASASEYAHRLDKLEENLPILQQPTEKVLADTKELVSSKVSQAQEMVSSAK
DTVATQLSEAVDATRGAVQSGVDKTKSVVTGGVQSVMGSRGQMLVLSGVDTVLGKSEEWADNHLPLTDAE
LARIATSLDGFVDVASVQQQRQEQSYFVRLGSLSERLRQHAYEHSGLKLRATKQRAQEALLQLSQALSLME
TVKQGVDDQKLVEGQEKLHQMWLSWNQKQLQGPEKPPKPEQVESRALTMFRDIAQQLQATCTSLGSSIQG
LPTNVKDQVQQARRQVEDLQATFSSIHSFQDLSSSILAQSRERVASAREALDHMVEYVAQNTPTVTLVGP
FAPGITEKAPEEKK

TRTRPLEQKLISEEDLAANDILDYKDDDDKV

Tag:	C-Myc/DDK
Predicted MW:	46.9 kDa
Concentration:	>0.05 µg/µL as determined by microplate BCA method
Purity:	> 80% as determined by SDS-PAGE and Coomassie blue staining
Buffer:	25 mM Tris-HCl, 100 mM glycine, pH 7.3, 10% glycerol
Preparation:	Recombinant protein was captured through anti-DDK affinity column followed by conventional chromatography steps.
Note:	For testing in cell culture applications, please filter before use. Note that you may experience some loss of protein during the filtration process.
Storage:	Store at -80°C.
Stability:	Stable for 12 months from the date of receipt of the product under proper storage and handling conditions. Avoid repeated freeze-thaw cycles.



[View online »](#)

RefSeq: [NP_005808](#)

Locus ID: 10226

UniProt ID: [O60664](#)

RefSeq Size: 2241

Cytogenetics: 19p13.3

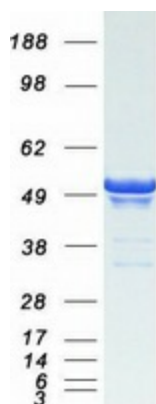
RefSeq ORF: 1302

Synonyms: M6PRBP1; PP17; TIP47

Summary: Mannose 6-phosphate receptors (MPRs) deliver lysosomal hydrolase from the Golgi to endosomes and then return to the Golgi complex. The protein encoded by this gene interacts with the cytoplasmic domains of both cation-independent and cation-dependent MPRs, and is required for endosome-to-Golgi transport. This protein also binds directly to the GTPase RAB9 (RAB9A), a member of the RAS oncogene family. The interaction with RAB9 has been shown to increase the affinity of this protein for its cargo. Multiple transcript variants encoding different isoforms have been found for this gene.[provided by RefSeq, Aug 2009]

Protein Families: Druggable Genome

Product images:



Coomassie blue staining of purified PLIN3 protein (Cat# [TP301193]). The protein was produced from HEK293T cells transfected with PLIN3 cDNA clone (Cat# [RC201193]) using MegaTran 2.0 (Cat# [TT210002]).