

## Product datasheet for TP301175

### GIPC (GIPC1) (NM\_202470) Human Recombinant Protein

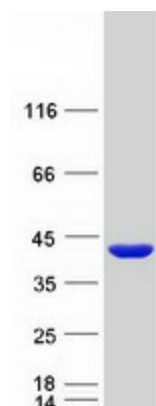
#### Product data:

Product Type:	Recombinant Proteins
Description:	Recombinant protein of human GIPC PDZ domain containing family, member 1 (GIPC1), transcript variant 5, 20 µg
Species:	Human
Expression Host:	HEK293T
Expression cDNA Clone or AA Sequence:	>RC201175 protein sequence <span style="color: red;">Red</span> =Cloning site <span style="color: green;">Green</span> =Tags(s)  MPLGLGRRKKAPPLVENEEAEPGRGGLGVGEPGLGGGGSGGPQMGLPPPPALRPLRVFHTQLAHGSPT GRIEGFTNVKELYGKIAEAFRLPTAEVMFCTLNTHKVDMDKLLGGQIGLEDIFAHVKGQRKEVEVFKSE DALGLTITDNGAGYAFIKRIKEGSVIDHIHLISVGDMIEAINGQSLLGCRHYEVARLLKELPRGRFTLTK LTEPRKAFDMISQRSAGGRPGSGPQLGTGRGTLRLRSRGPATVEDLPFAFEKAIEKVDDLLESYMGIRD TELAATMVELGDKRNPDELAELDERLGDFAFDPDEFVDVWGAIGDAKVGRY  <span style="color: red;">TR</span> <span style="color: green;">TRPLEQKLISEEDLAANDILDYKDDDDKV</span>
Tag:	C-Myc/DDK
Predicted MW:	35.9 kDa
Concentration:	>0.05 µg/µL as determined by microplate BCA method
Purity:	> 80% as determined by SDS-PAGE and Coomassie blue staining
Buffer:	25 mM Tris-HCl, 100 mM glycine, pH 7.3, 10% glycerol
Preparation:	Recombinant protein was captured through anti-DDK affinity column followed by conventional chromatography steps.
Note:	For testing in cell culture applications, please filter before use. Note that you may experience some loss of protein during the filtration process.
Storage:	Store at -80°C.
Stability:	Stable for 12 months from the date of receipt of the product under proper storage and handling conditions. Avoid repeated freeze-thaw cycles.
RefSeq:	<u><a href="#">NP_974199</a></u>
Locus ID:	10755


[View online »](#)

UniProt ID:	<u>O14908</u> , <u>A0A024R7I0</u>
RefSeq Size:	1820
Cytogenetics:	19p13.12
RefSeq ORF:	999
Synonyms:	C19orf3; GIPC; GLUT1CBP; Hs.6454; IIP-1; NIP; OPDM2; RGS19IP1; SEMCAP; SYNECTIIN; SYNECTIN; TIP-2
Summary:	GIPC1 is a scaffolding protein that regulates cell surface receptor expression and trafficking (Lee et al., 2008 [PubMed 18775991]).[supplied by OMIM, Apr 2009]
Protein Families:	Druggable Genome

### Product images:



Coomassie blue staining of purified GIPC1 protein (Cat# TP301175). The protein was produced from HEK293T cells transfected with GIPC1 cDNA clone (Cat# [RC201175]) using MegaTran 2.0 (Cat# [TT210002]).