

Product datasheet for **TP301143L**

PPIC (NM_000943) Human Recombinant Protein

Product data:

Product Type: Recombinant Proteins

Description: Recombinant protein of human peptidylprolyl isomerase C (cyclophilin C) (PPIC), 1 mg

Species: Human

Expression Host: HEK293T

**Expression cDNA Clone
or AA Sequence:** >RC201143 protein sequence
Red=Cloning site **Green**=Tags(s)

MGPGPRLLLPLVLCVGLGALVFSSGAEGFRKRGPSVTAKVFFDVRIGDKDVGRIVIGLFGKVVPKTVENF
VALATGEKGYGYKGSKFHRVIKDFMIQGGDITTDGDTGGVSIYGETFPDENFKLKHYGIGWVSMANAGPD
TNGSQFFITLTKPTWLDGKHVFGKVIDGMTVVHSIELQATDGHDRPLTNCISIINSGKIDVKTPFVVEIA
DW

TRTRPLEQKLISEEDLAANDILDYKDDDDKV

Tag: C-Myc/DDK

Predicted MW: 22.6 kDa

Concentration: >0.05 µg/µL as determined by microplate BCA method

Purity: > 80% as determined by SDS-PAGE and Coomassie blue staining

Buffer: 25 mM Tris-HCl, 100 mM glycine, pH 7.3, 10% glycerol

Preparation: Recombinant protein was captured through anti-DDK affinity column followed by conventional chromatography steps.

Note: For testing in cell culture applications, please filter before use. Note that you may experience some loss of protein during the filtration process.

Storage: Store at -80°C.

Stability: Stable for 12 months from the date of receipt of the product under proper storage and handling conditions. Avoid repeated freeze-thaw cycles.

RefSeq: [NP_000934](#)

Locus ID: 5480

UniProt ID: [P45877](#)



[View online »](#)

RefSeq Size: 1241

Cytogenetics: 5q23.2

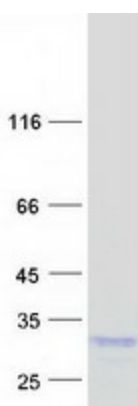
RefSeq ORF: 636

Synonyms: CYPC

Summary: The protein encoded by this gene is a member of the peptidyl-prolyl cis-trans isomerase (PPIase) family. PPIases catalyze the cis-trans isomerization of proline imidic peptide bonds in oligopeptides and accelerate the folding of proteins. Similar to other PPIases, this protein can bind immunosuppressant cyclosporin A. [provided by RefSeq, Jul 2008]

Protein Families: Transmembrane

Product images:



Coomassie blue staining of purified PPIC protein (Cat# [TP301143]). The protein was produced from HEK293T cells transfected with PPIC cDNA clone (Cat# [RC201143]) using MegaTran 2.0 (Cat# [TT210002]).