

## Product datasheet for **TP301141M**

### PRC1 (NM\_003981) Human Recombinant Protein

#### Product data:

Product Type:	Recombinant Proteins
Description:	Recombinant protein of human protein regulator of cytokinesis 1 (PRC1), transcript variant 1, 100 µg
Species:	Human
Expression Host:	HEK293T
Expression cDNA Clone or AA Sequence:	>RC201141 protein sequence <b>Red</b> =Cloning site <b>Green</b> =Tags(s)

MRRSEVLAEEISVCLQKALNHLREIWELIGIPEDQRLQRTEVVKKHIKELLDMMIAEEESLKERLIKSIS  
VCQKELNTLCSELHVPEPFQEEGETTILQLEKDLRTQVELMRKQKQKQKQELKLLQEQQELCEILCMPHY  
DIDSASVPSLEELNQFRQHVTTLRETKASRREEFVSIKRQIILCMEELDHTPDTSFERDVCEDEDAFL  
SLENIATLQKLLRQLEMQKSQNEAVCEGLRTQIRELWDRLQIPEEEREAVATIMSGSKAKVRKALQLEVD  
RLEELKMQNMKKVIEAIRVELVQYWDQCFYSQEQRQAFAPFCAEDYTESLLQLHDAEIVRLKNYYEVHKE  
LFEQVQKWEETWRLFLEFERKASDPNRFTRGGNLLKEEKQRAKLQKMLPKLEELKARIELWEQEHSKA  
FMVNGQKFMIEYVAEQWEMHRLEKERAKQERQLKNKKQTETEMLYGSAPRTPSKRRGLPNTPGKARKLNT  
TTMSNATANSSIRPIFGGTVYHSPVSRLLPPSGSKPVAASTCSGKKTPTRTGRHGANKENLELNGSILSGGY  
PGSAPLQRNFSINSVASTYSEFAKDPSSLSDSSTVGLQRELSKASKSDATSGILNSTNIQS

**TRTRPLEQKLISEEDLAANDILDYKDDDDKV**

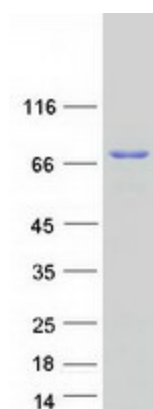
Tag:	C-Myc/DDK
Predicted MW:	71.5 kDa
Concentration:	>0.05 µg/µL as determined by microplate BCA method
Purity:	> 80% as determined by SDS-PAGE and Coomassie blue staining
Buffer:	25 mM Tris-HCl, 100 mM glycine, pH 7.3, 10% glycerol
Preparation:	Recombinant protein was captured through anti-DDK affinity column followed by conventional chromatography steps.
Note:	For testing in cell culture applications, please filter before use. Note that you may experience some loss of protein during the filtration process.
Storage:	Store at -80°C.



[View online »](#)

<b>Stability:</b>	Stable for 12 months from the date of receipt of the product under proper storage and handling conditions. Avoid repeated freeze-thaw cycles.
<b>RefSeq:</b>	<a href="#">NP_003972</a>
<b>Locus ID:</b>	9055
<b>UniProt ID:</b>	<a href="#">O43663</a> , <a href="#">A0A024RC67</a>
<b>RefSeq Size:</b>	3207
<b>Cytogenetics:</b>	15q26.1
<b>RefSeq ORF:</b>	1860
<b>Synonyms:</b>	ASE1
<b>Summary:</b>	This gene encodes a protein that is involved in cytokinesis. The protein is present at high levels during the S and G2/M phases of mitosis but its levels drop dramatically when the cell exits mitosis and enters the G1 phase. It is located in the nucleus during interphase, becomes associated with mitotic spindles in a highly dynamic manner during mitosis, and localizes to the cell mid-body during cytokinesis. This protein has been shown to be a substrate of several cyclin-dependent kinases (CDKs). It is necessary for polarizing parallel microtubules and concentrating the factors responsible for contractile ring assembly. Alternative splicing results in multiple transcript variants. [provided by RefSeq, Jun 2012]

### Product images:



Coomassie blue staining of purified PRC1 protein (Cat# [TP301141]). The protein was produced from HEK293T cells transfected with PRC1 cDNA clone (Cat# [RC201141]) using MegaTran 2.0 (Cat# [TT210002]).