

## Product datasheet for TP301136M

### CRALBP (RLBP1) (NM\_000326) Human Recombinant Protein

#### Product data:

**Product Type:** Recombinant Proteins

**Description:** Recombinant protein of human retinaldehyde binding protein 1 (RLBP1), 100 µg

**Species:** Human

**Expression Host:** HEK293T

**Expression cDNA Clone or AA Sequence:** >RC201136 protein sequence  
**Red**=Cloning site **Green**=Tags(s)

MSEGVGTFRMVPEEEQELRAQLEQLTTKDHGPFVFGPCSQLPRHTLQKAKDELNEREETREEAVRELQEMV  
QAQAASGEELAVAVAERVQEKDSGFFLRFIRARKFNVGRAYELLRGYVNFRLQYPELFDLSPEAVRCTI  
EAGYPGVLSSRDKYGRVWMLFNIENWQSQEITFDEILQAYCFILEKLLENEETQINGFCIIENFKGFTMQ  
QAASLRSDLRKMVDMLQDSFPARFKAIHFHQWYFTTTYNVVKPFLKSKLLERFVHGDDLSGFYQEI  
DENILPSDFGGTLPKYDGKAVAEQLFGPQAQAENTAF

**TRTRPLEQKLISEEDLAANDILDYKDDDDKV**

**Tag:** C-Myc/DDK

**Predicted MW:** 36.3 kDa

**Concentration:** >0.05 µg/µL as determined by microplate BCA method

**Purity:** > 80% as determined by SDS-PAGE and Coomassie blue staining

**Buffer:** 25 mM Tris-HCl, 100 mM glycine, pH 7.3, 10% glycerol

**Preparation:** Recombinant protein was captured through anti-DDK affinity column followed by conventional chromatography steps.

**Note:** For testing in cell culture applications, please filter before use. Note that you may experience some loss of protein during the filtration process.

**Storage:** Store at -80°C.

**Stability:** Stable for 12 months from the date of receipt of the product under proper storage and handling conditions. Avoid repeated freeze-thaw cycles.

**RefSeq:** [NP\\_000317](#)

**Locus ID:** 6017



[View online »](#)

UniProt ID: [P12271](#)

RefSeq Size: 1752

Cytogenetics: 15q26.1

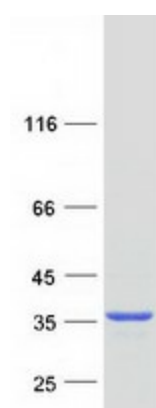
RefSeq ORF: 951

Synonyms: CRALBP

**Summary:** The protein encoded by this gene is a 36-kD water-soluble protein which carries 11-cis-retinaldehyde or 11-cis-retinal as physiologic ligands. It may be a functional component of the visual cycle. Mutations of this gene have been associated with severe rod-cone dystrophy, Bothnia dystrophy (nonsyndromic autosomal recessive retinitis pigmentosa) and retinitis punctata albescens. [provided by RefSeq, Jul 2008]

**Protein Families:** Druggable Genome

### Product images:



Coomassie blue staining of purified RLBP1 protein (Cat# [TP301136]). The protein was produced from HEK293T cells transfected with RLBP1 cDNA clone (Cat# [RC201136]) using MegaTran 2.0 (Cat# [TT210002]).