

Product datasheet for TP301136

CRALBP (RLBP1) (NM_000326) Human Recombinant Protein

Product data:

Product Type:	Recombinant Proteins
Description:	Recombinant protein of human retinaldehyde binding protein 1 (RLBP1), 20 µg
Species:	Human
Expression Host:	HEK293T
Expression cDNA Clone or AA Sequence:	>RC201136 protein sequence Red =Cloning site Green =Tags(s)
	MSEGVGTFRMVPEEEQELRAQLEQLTTKDHGPFVFGPCSQLPRHTLQKAKDELNEREETREEAVRELQEMV QAQAASGEELAVAVAERVQEKDSGFFLRIFIRARKFNVGRAYELLRGYVNFRLQYPELFDLSPEAVRCTI EAGYPGVLSSRDKYGRVWMLFNIENWQSQEITFDEILQAYCFILEKLLENEETQINGFCIIENFKGFTMQ QAASLRSDLRKMVDMLQDSFPARFKAIHFHQWYFTTTYNVVKPFLKSKLLERFVHGDDLSGFYQEI DENILPSDFGGTLPKYDGKAVAEQLFGPQAQAENTAF
	TRTRPLEQKLISEEDLAANDILDYKDDDDKV
Tag:	C-Myc/DDK
Predicted MW:	36.3 kDa
Concentration:	>0.05 µg/µL as determined by microplate BCA method
Purity:	> 80% as determined by SDS-PAGE and Coomassie blue staining
Buffer:	25 mM Tris-HCl, 100 mM glycine, pH 7.3, 10% glycerol
Preparation:	Recombinant protein was captured through anti-DDK affinity column followed by conventional chromatography steps.
Note:	For testing in cell culture applications, please filter before use. Note that you may experience some loss of protein during the filtration process.
Storage:	Store at -80°C.
Stability:	Stable for 12 months from the date of receipt of the product under proper storage and handling conditions. Avoid repeated freeze-thaw cycles.
RefSeq:	<u>NP_000317</u>
Locus ID:	6017



[View online »](#)

UniProt ID: [P12271](#)

RefSeq Size: 1752

Cytogenetics: 15q26.1

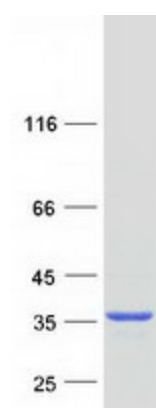
RefSeq ORF: 951

Synonyms: CRALBP

Summary: The protein encoded by this gene is a 36-kD water-soluble protein which carries 11-cis-retinaldehyde or 11-cis-retinal as physiologic ligands. It may be a functional component of the visual cycle. Mutations of this gene have been associated with severe rod-cone dystrophy, Bothnia dystrophy (nonsyndromic autosomal recessive retinitis pigmentosa) and retinitis punctata albescens. [provided by RefSeq, Jul 2008]

Protein Families: Druggable Genome

Product images:



Coomassie blue staining of purified RLBP1 protein (Cat# TP301136). The protein was produced from HEK293T cells transfected with RLBP1 cDNA clone (Cat# [RC201136]) using MegaTran 2.0 (Cat# [TT210002]).