

Product datasheet for TP301129L

AP2B1 (NM_001030006) Human Recombinant Protein

Product data:

Product Type:	Recombinant Proteins
Description:	Recombinant protein of human adaptor-related protein complex 2, beta 1 subunit (AP2B1), transcript variant 1, 1 mg
Species:	Human
Expression Host:	HEK293T
Expression cDNA Clone or AA Sequence:	>RC201129 representing NM_001030006 Red=Cloning site Green=Tags(s)

MTDSKYFTTNKKGEIFELKAELNNEKKEKRKEAVKKVIAAMTVGKDVSSLFPDWNCMQTDNLELKKLVY
LYLMNYAKSQPDMAIMAVNSFVKDCEDPNPLIRALAVRTMGCIRVDKITEYLCEPLRCKLKDEDPYVRKT
AAVCVAKLHDINAQMVEDQGFLDSLRLDIADSNPMVAVANAALSEISESHPSNLLDLNPQNINKLLTA
LNECTEWGQIFILDCLSNYNPKDDREAQSICERVTPRLSHANSVAVLSAVKVLKMFLELLPKDSDYNNML
LKKLAPPLVTLSSGPEVQYVALRNINLIVQKRPEILKQEIKVFFVKYNDPIYVKLEKLDIMIRLASQAN
IAQVLAELKEYATEVDVDFVRKAVRAIGRCAIKVEQSAERCVSTLLDLIQTKVNYVQEAIVVIRDIFRK
YPNKYESIATLCENLDSLDEPDARAAMIWIVGEYAERIDNADELLESFLEGFHDDESTQVQLTLLTAIVK
LFLKKPSETQELVQQVLSLATQSDNPNDLRDRGYIYWRLSTDPVTAKEVVLSEKPLISEETDLIEPTLL
DELICHIGSLASVYHKPPNAFVEGSHGIHRKHLPIHHGSTDAGDSPVGTATTATNLEQPQVIPSQGDLLGD
LLNLDLGPVNVNPQVSSMQMGAVDLLGGGLDSSLGSDLGGGIGGSPAVGQSFIPSSVPATFAPSPTPAV
SSGLNDFELSTGIGMAPGGYVAPKAVWLPVAKAKGLEISGTFTHRQGHYMEMNFTNKALQHMTDFAIQ
FNKNSFGVIPSTPLAIHTPLMPNQSIDVSLPLNLTLPVMEPLNQLQVAVKNNIDVFYFSLIPLNVLF
VEDGKMERQVFLATWKDIPNENELQFQIKECHLNADTVSSKLQNNNVYTIKRNVQDMLYQSLKLTNG
IWILAEALRIQPGNPNYTLSLKCRAPEVVSQYIYQVYDSILKN

TRTRPLEQKLISEEDLAANDILDYKDDDDKV

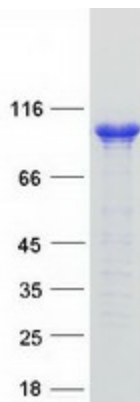
Tag:	C-Myc/DDK
Predicted MW:	105.5 kDa
Concentration:	>0.05 µg/µL as determined by microplate BCA method
Purity:	> 80% as determined by SDS-PAGE and Coomassie blue staining
Buffer:	25 mM Tris-HCl, 100 mM glycine, pH 7.3, 10% glycerol



[View online »](#)

Preparation:	Recombinant protein was captured through anti-DDK affinity column followed by conventional chromatography steps.
Note:	For testing in cell culture applications, please filter before use. Note that you may experience some loss of protein during the filtration process.
Storage:	Store at -80°C.
Stability:	Stable for 12 months from the date of receipt of the product under proper storage and handling conditions. Avoid repeated freeze-thaw cycles.
RefSeq:	NP_001025177
Locus ID:	163
UniProt ID:	P63010 , A0A140VJE8 , Q96EL6
RefSeq Size:	5772
Cytogenetics:	17q12
RefSeq ORF:	2853
Synonyms:	ADTB2; AP2-BETA; AP105B; CLAPB1
Summary:	The protein encoded by this gene is one of two large chain components of the assembly protein complex 2, which serves to link clathrin to receptors in coated vesicles. The encoded protein is found on the cytoplasmic face of coated vesicles in the plasma membrane. Two transcript variants encoding different isoforms have been found for this gene. [provided by RefSeq, Jul 2008]
Protein Families:	Druggable Genome
Protein Pathways:	Endocytosis, Huntington's disease

Product images:



Coomassie blue staining of purified AP2B1 protein (Cat# [TP301129]). The protein was produced from HEK293T cells transfected with AP2B1 cDNA clone (Cat# [RC201129]) using MegaTran 2.0 (Cat# [TT210002]).