

Product datasheet for **TP301123L**

ASCL1 (NM_004316) Human Recombinant Protein

Product data:

Product Type: Recombinant Proteins

Description: Recombinant protein of human achaete-scute complex homolog 1 (Drosophila) (ASCL1), 1 mg

Species: Human

Expression Host: HEK293T

Expression cDNA >RC201123 protein sequence

Clone or AA **Red**=Cloning site **Green**=Tags(s)

Sequence:

MESSAKMESGGAGQQPQPQPQPFLPPAACFFATAAAAAAAAAAAAAAQAQQQQQQQQQQQAPQLRPAA
DGQPSGGGHKSAPKQVKRQRSSPELMRCKRRLNFSGFGYSLPQQQPAAVARRNERERNRVKLVNLGFAT
LREHVPNGAANKKMSKVETLRSAYEYIRALQQLLDEHDAVSAAFQAGVLSPTISPNYSNDLNSMAGSPVS
SYSSDEGSYDPLSPEEQELLDFTNWF

TRTRPLEQKLISEEDLAANDILDYKDDDDKV

Tag: C-Myc/DDK

Predicted MW: 25.3 kDa

Concentration: >0.05 µg/µL as determined by microplate BCA method

Purity: > 80% as determined by SDS-PAGE and Coomassie blue staining

Buffer: 25 mM Tris-HCl, 100 mM glycine, pH 7.3, 10% glycerol

Preparation: Recombinant protein was captured through anti-DDK affinity column followed by conventional chromatography steps.

Note: For testing in cell culture applications, please filter before use. Note that you may experience some loss of protein during the filtration process.

Storage: Store at -80°C.

Stability: Stable for 12 months from the date of receipt of the product under proper storage and handling conditions. Avoid repeated freeze-thaw cycles.

RefSeq: [NP_004307](#)

Locus ID: 429

UniProt ID: [P50553](#)



[View online >](#)

RefSeq Size: 2490

Cytogenetics: 12q23.2

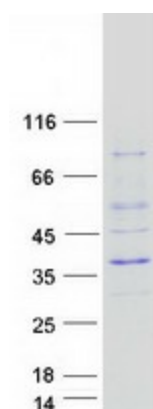
RefSeq ORF: 708

Synonyms: ASH1; bHLHa46; HASH1; MASH1

Summary: This gene encodes a member of the basic helix-loop-helix (BHLH) family of transcription factors. The protein activates transcription by binding to the E box (5'-CANNTG-3'). Dimerization with other BHLH proteins is required for efficient DNA binding. This protein plays a role in the neuronal commitment and differentiation and in the generation of olfactory and autonomic neurons. Mutations in this gene may contribute to the congenital central hypoventilation syndrome (CCHS) phenotype in rare cases. [provided by RefSeq, Jul 2008]

Protein Families: Druggable Genome, Transcription Factors

Product images:



Coomassie blue staining of purified ASCL1 protein (Cat# [TP301123]). The protein was produced from HEK293T cells transfected with ASCL1 cDNA clone (Cat# [RC201123]) using MegaTran 2.0 (Cat# [TT210002]).