

## Product datasheet for **TP30119M**

### **DUSP3 (NM\_004090) Human Recombinant Protein**

#### Product data:

**Product Type:** Recombinant Proteins

**Description:** Recombinant protein of human dual specificity phosphatase 3 (DUSP3), 100 µg

**Species:** Human

**Expression Host:** HEK293T

**Expression cDNA Clone  
or AA Sequence:** >RC201119 protein sequence  
**Red**=Cloning site **Green**=Tags(s)

MSGSFELSVQDLNDLLSDGSGCYSLPSQPCNEVTPRIYVGNASVAQDIPKLQKLGITHVLNAAEGRSFMH  
VNTNANFYKDSGITYLGIKANDTQEFNLSAYFERAADFIDQALAQKNGRVLVHCREGYSRSPTLVIAYLM  
MRQKMDVKSALSIVRQNREIGPNDGFLAQLCQLNDRLAKEGKLP

**SGPTRTRPLEQKLISEEDLAANDILDYKDDDDKV**

**Tag:** C-Myc/DDK

**Predicted MW:** 20.3 kDa

**Concentration:** >0.05 µg/µL as determined by microplate BCA method

**Purity:** > 80% as determined by SDS-PAGE and Coomassie blue staining

**Buffer:** 25 mM Tris-HCl, 100 mM glycine, pH 7.3, 10% glycerol

**Preparation:** Recombinant protein was captured through anti-DDK affinity column followed by conventional chromatography steps.

**Note:** For testing in cell culture applications, please filter before use. Note that you may experience some loss of protein during the filtration process.

**Storage:** Store at -80°C.

**Stability:** Stable for 12 months from the date of receipt of the product under proper storage and handling conditions. Avoid repeated freeze-thaw cycles.

**RefSeq:** [NP\\_004081](#)

**Locus ID:** 1845

**UniProt ID:** [P51452](#)

**RefSeq Size:** 4139



[View online »](#)

Cytogenetics: 17q21.31

RefSeq ORF: 555

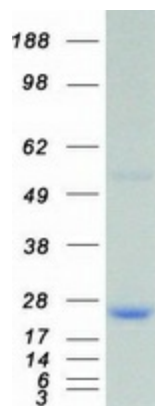
Synonyms: VHR

**Summary:** The protein encoded by this gene is a member of the dual specificity protein phosphatase subfamily. These phosphatases inactivate their target kinases by dephosphorylating both the phosphoserine/threonine and phosphotyrosine residues. They negatively regulate members of the mitogen-activated protein (MAP) kinase superfamily (MAPK/ERK, SAPK/JNK, p38), which are associated with cellular proliferation and differentiation. Different members of the family of dual specificity phosphatases show distinct substrate specificities for various MAP kinases, different tissue distribution and subcellular localization, and different modes of inducibility of their expression by extracellular stimuli. This gene maps in a region that contains the BRCA1 locus which confers susceptibility to breast and ovarian cancer. Although DUSP3 is expressed in both breast and ovarian tissues, mutation screening in breast cancer pedigrees and in sporadic tumors was negative, leading to the conclusion that this gene is not BRCA1. [provided by RefSeq, Jul 2008]

**Protein Families:** Druggable Genome, Phosphatase

**Protein Pathways:** MAPK signaling pathway

### Product images:



Coomassie blue staining of purified DUSP3 protein (Cat# [TP301119]). The protein was produced from HEK293T cells transfected with DUSP3 cDNA clone (Cat# [RC201119]) using MegaTran 2.0 (Cat# [TT210002]).