

Product datasheet for TP301111L

Cortactin (CTTN) (NM_138565) Human Recombinant Protein

Product data:

Product Type: Recombinant Proteins

Description: Recombinant protein of human cortactin (CTTN), transcript variant 2, 1 mg

Species: Human

Expression Host: HEK293T

Expression cDNA >RC201111 protein sequence

Clone or AA Red=Cloning site Green=Tags(s)

Sequence:

MWKASAGHAVSIAQDDAGADDWETDPDFVNDVSEKEQRWGAKTVQGGSGHQEHINIHKLRENVFQEHQTLK
EKELETGPKASHGYGGKFGVEQDRMDKSAVGHHEYQSKLSKHCSQVDSVRGFGGKFGVQMDRVDQSAVGFE
YQGKTEKHASQKDYSSGFGGKYGVQADRVDKSAVGFQYQKTEKHESQRDYSKFGGKYGIDKDKVDKSA
VGFQYQKTEKHESQKDYVKGFGGKFGVQTDQRQDKALGWDHQEKLQLHESQKDYSGFGGKYGVQKDRM
DKNASTFEDVTQVSSAYQKTPVEAVTSKTSNIRANFENLAKEKEQEDRRKAEAEARAQRMAKERQEQUEEA
RRKLEEQARAKTQTPPVSPAPQTEERLPSSPVYEDAASFKAELSYRGPVSGTEPEPVYSMEAADYREAS
SQQGLAYATEAVYESAEAPGHYPAEDSTYDEYENDLGITAVALYDYQAAGDDEISFDPDDIITNIEMIDD
GWWRGVCKGRYGLFPANYVELRQ

TRTRPLEQKLISEEDLAANDILDYKDDDDKV

Tag: C-Myc/DDK

Predicted MW: 57.3 kDa

Concentration: >0.05 µg/µL as determined by microplate BCA method

Purity: > 80% as determined by SDS-PAGE and Coomassie blue staining

Buffer: 25 mM Tris-HCl, 100 mM glycine, pH 7.3, 10% glycerol

Bioactivity: ELISA capture for autoantibodies (PMID: [27379450](#))

ELISA capture for autoantibodies (PMID: [29068555](#))

Preparation: Recombinant protein was captured through anti-DDK affinity column followed by conventional chromatography steps.

Note: For testing in cell culture applications, please filter before use. Note that you may experience some loss of protein during the filtration process.

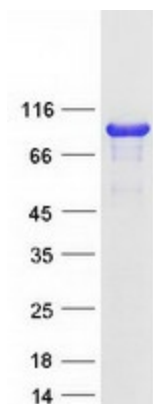
Storage: Store at -80°C.



[View online >](#)

Stability:	Stable for 12 months from the date of receipt of the product under proper storage and handling conditions. Avoid repeated freeze-thaw cycles.
RefSeq:	NP_612632
Locus ID:	2017
UniProt ID:	Q14247 , Q53HG7 , A0A024R5M3 , Q8N707
RefSeq Size:	3208
Cytogenetics:	11q13.3
RefSeq ORF:	1539
Synonyms:	EMS1
Summary:	This gene is overexpressed in breast cancer and squamous cell carcinomas of the head and neck. The encoded protein is localized in the cytoplasm and in areas of the cell-substratum contacts. This gene has two roles: (1) regulating the interactions between components of adherens-type junctions and (2) organizing the cytoskeleton and cell adhesion structures of epithelia and carcinoma cells. During apoptosis, the encoded protein is degraded in a caspase-dependent manner. The aberrant regulation of this gene contributes to tumor cell invasion and metastasis. Three splice variants that encode different isoforms have been identified for this gene. [provided by RefSeq, May 2010]
Protein Families:	Druggable Genome
Protein Pathways:	Pathogenic Escherichia coli infection, Tight junction

Product images:



Coomassie blue staining of purified CTTN protein (Cat# [TP301111]). The protein was produced from HEK293T cells transfected with CTTN cDNA clone (Cat# [RC201111]) using MegaTran 2.0 (Cat# [TT210002]).