

## Product datasheet for TP301111

### Cortactin (CTTN) (NM\_138565) Human Recombinant Protein

#### Product data:

|                                       |  |
|---------------------------------------|--|
| Product Type:                         | Recombinant Proteins   |
| Description:                          | Recombinant protein of human cortactin (CTTN), transcript variant 2, 20 µg |
| Species:                              | Human  |
| Expression Host:                      | HEK293T  |
| Expression cDNA Clone or AA Sequence: | >RC201111 protein sequence<br>Red=Cloning site Green=Tags(s)               |

MWKASAGHAVSIAQDDAGADDWETPDFVNDVSEKEQRWGAKTVQGSGHQEHINIHKLRENVFQEHQ  
TLK  
EKELETGPKASHGYGGKFGVEQDRMDKSAVGHEYQSKLSKHCSQVDSVRGFGGKFGVQMDRVDQSAVG  
FE  
YQGKTEKHASQKDYSSGFGGKYGVQADRVDKSAVGFDYQGKTEKHESQRDYSKGFGGKYGIDKDKVDS  
A  
VGFEYQGKTEKHESQKDYVKGFGGKFGVQTDQRQDKCALGWDHQEKLQLHESQKDYSKGFGGKYGVQKD  
RM  
DKNASTFEDVTQVSSAYQKTPVEAVTSKTSNIRANFENLAKEKEQEDRRKAEAEARAQRMAYERQEAEA  
RRKLEEQARAKTQTPPVSPAPQPTTEERLPSSPVYEDAASFKAELSYRGPVSGTEPEPVYSMEAADYREAS  
SQQGLAYATEAVYESAEAPGHYPAEDSTYDEYENDLGITAVALYDYQAAGDDEISFDPDDIITNIEMIDD  
GWWRGVCKGRYGLFPANYVELRQ

TRTRPLEQKLISEEDLAANDILDYKDDDDKV

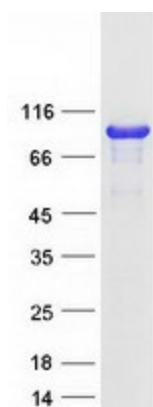
|                |  |
|----------------|--|
| Tag:           | C-Myc/DDK  |
| Predicted MW:  | 57.3 kDa   |
| Concentration: | >0.05 µg/µL as determined by microplate BCA method   |
| Purity:        | > 80% as determined by SDS-PAGE and Coomassie blue staining  |
| Buffer:        | 25 mM Tris-HCl, 100 mM glycine, pH 7.3, 10% glycerol   |
| Bioactivity:   | ELISA capture for autoantibodies (PMID: <a href="#">27379450</a> )<br>ELISA capture for autoantibodies (PMID: <a href="#">29068555</a> ) |
| Preparation:   | Recombinant protein was captured through anti-DDK affinity column followed by conventional chromatography steps.                         |



[View online »](#)

|                          |   |
|--------------------------|---|
| <b>Note:</b>             | For testing in cell culture applications, please filter before use. Note that you may experience some loss of protein during the filtration process.  |
| <b>Storage:</b>          | Store at -80°C.   |
| <b>Stability:</b>        | Stable for 12 months from the date of receipt of the product under proper storage and handling conditions. Avoid repeated freeze-thaw cycles.   |
| <b>RefSeq:</b>           | <a href="#">NP_612632</a>   |
| <b>Locus ID:</b>         | 2017  |
| <b>UniProt ID:</b>       | <a href="#">Q14247</a>  |
| <b>RefSeq Size:</b>      | 3208  |
| <b>Cytogenetics:</b>     | 11q13.3   |
| <b>RefSeq ORF:</b>       | 1539  |
| <b>Synonyms:</b>         | EMS1  |
| <b>Summary:</b>          | This gene is overexpressed in breast cancer and squamous cell carcinomas of the head and neck. The encoded protein is localized in the cytoplasm and in areas of the cell-substratum contacts. This gene has two roles: (1) regulating the interactions between components of adherens-type junctions and (2) organizing the cytoskeleton and cell adhesion structures of epithelia and carcinoma cells. During apoptosis, the encoded protein is degraded in a caspase-dependent manner. The aberrant regulation of this gene contributes to tumor cell invasion and metastasis. Three splice variants that encode different isoforms have been identified for this gene. [provided by RefSeq, May 2010] |
| <b>Protein Families:</b> | Druggable Genome  |
| <b>Protein Pathways:</b> | Pathogenic Escherichia coli infection, Tight junction   |

### Product images:



Coomassie blue staining of purified CTTN protein (Cat# TP301111). The protein was produced from HEK293T cells transfected with CTTN cDNA clone (Cat# [RC201111]) using MegaTran 2.0 (Cat# [TT210002]).