

Product datasheet for TP301100M

KIF20A (NM_005733) Human Recombinant Protein

Product data:

Product Type:	Recombinant Proteins
Description:	Recombinant protein of human kinesin family member 20A (KIF20A), 100 µg
Species:	Human
Expression Host:	HEK293T
Expression cDNA Clone or AA Sequence:	>RC201100 representing NM_005733 Red=Cloning site Green=Tags(s)

MSQGILSPAGLLSDDDVVSPMFESTAADLGSVRKNLLSDCSVSTSLQVPSSEDSMEKVKVYLR
VRPLLPELERQEDQGCVRIENVETLVLQAPKDSFALKSNERGIGQATHRFTFSQIFGPEVGGQASFFNLT
VKEMVKDVLKQGNWLIYTYGVTNSGKTHTIQGTIKDGGILPRSLALIFNSLQGGQLHPTDLKPLLSNEVI
WLDSKQIRQEEMKLSLLNGGLQEEELSTSLKRSVYIESRIGTSTSFDSGIAGLSSISQCTSSSQLDETS
HRWAQPDAPLPVPANIRFSIWISFFEIYNELLYDLLEPPSQQRKRQTLRLCEDQNGNPNYVKDLNWIHVQ
DAEEAWKLLKVGRKNQSFATHLNQNSSRSHSIFIRILHLQEGDIVPKISELSLCDLAGSERCKDQKS
GERLKEAGNINTSLHTLGRGIAALRQNRQNRSKQNLVPRFRDQSKLTRVFQGGFTGRGRSCMIVNVNPCAST
YDETLHVAKFSAIASQLVHAPPMQLGFPSLHFSIKEHLSQVSPSLEKGAADTGLDDDDIENEADISMYGK
EELLQWEAMKTLKLERQEKLEMLHLRDEICNEMVEQMQQREQWCSEHLDTQKELLEEMYEELNLIK
ESLTSFYQEEIQERDEKIEELEALLQEARQQSVAHQQSGSELALRRSQRLAASASTQQLQEVKAKLQCK
AELNSTTEELHXYQKMLEPPPSAKPFTIDVDKLEEGQKNIRLLRTELQKLGESLQSAERACCHSTGAGK
LRQALTTCCDILIKQDQTLAELQNNMVLKDLRKAACIAEQYHTVLKLGQVSAKRLGTNQNENQQPN
QQPPGKKPFLRNLLPRTPTCQSSTDCSPYARILRSRRSPLLKSGPFGKKY

TRTRPLEQKLISEEDLAANDILDYKDDDDKV

Tag:	C-Myc/DDK
Predicted MW:	100.1 kDa
Concentration:	>0.05 µg/µL as determined by microplate BCA method
Purity:	> 80% as determined by SDS-PAGE and Coomassie blue staining
Buffer:	25 mM Tris-HCl, 100 mM glycine, pH 7.3, 10% glycerol
Preparation:	Recombinant protein was captured through anti-DDK affinity column followed by conventional chromatography steps.



[View online »](#)

Note: For testing in cell culture applications, please filter before use. Note that you may experience some loss of protein during the filtration process.

Storage: Store at -80°C.

Stability: Stable for 12 months from the date of receipt of the product under proper storage and handling conditions. Avoid repeated freeze-thaw cycles.

RefSeq: [NP_005724](#)

Locus ID: 10112

UniProt ID: [O95235](#)

RefSeq Size: 2972

Cytogenetics: 5q31.2

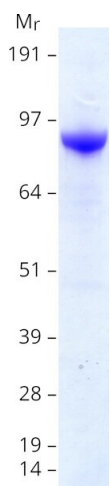
RefSeq ORF: 2670

Synonyms: MKLP2; RAB6KIFL

Summary: Mitotic kinesin required for chromosome passenger complex (CPC)-mediated cytokinesis. Following phosphorylation by PLK1, involved in recruitment of PLK1 to the central spindle. Interacts with guanosine triphosphate (GTP)-bound forms of RAB6A and RAB6B. May act as a motor required for the retrograde RAB6 regulated transport of Golgi membranes and associated vesicles along microtubules. Has a microtubule plus end-directed motility. [UniProtKB/Swiss-Prot Function]

Protein Families: Druggable Genome

Product images:



Coomassie blue staining of purified KIF20A protein (Cat# [TP301100]). The protein was produced from HEK293T cells transfected with KIF20A cDNA clone (Cat# [RC201100]) using MegaTran 2.0 (Cat# [TT210002]).