

## Product datasheet for TP301100L

### KIF20A (NM\_005733) Human Recombinant Protein

#### Product data:

**Product Type:** Recombinant Proteins  
**Description:** Recombinant protein of human kinesin family member 20A (KIF20A), 1 mg  
**Species:** Human  
**Expression Host:** HEK293T  
**Expression cDNA Clone or AA Sequence:** >RC201100 representing NM\_005733  
Red=Cloning site Green=Tags(s)

MSQGILSPPAGLLSDDDVVSPMFESTAADLGSVRKNLLSDCSVSTSLQVPSSEDSMEKVKVYLR  
 VRPLLPELERQEDQGCVRIENVETLVLQAPKDSFALKSNERGIGQATHRFTFSQIFGPEVGGQASFFNLT  
 VKEMVKDVLKGNWLIYTYGVTNSGKTHTIQGTIKDGGILPRSLALIFNSLQGGQLHPTPDLKPLLSNEVI  
 WLDSKQIRQEEMKLSLLNGGLQEEELSTSLKRSVYIESRIGTSTSFDSGIAGLSSISQCTSSSQLDETS  
 HRWAQPDAPLPVPANIRFSIWISFFEIYNELLYDLLEPPSQQRKRQTLRLCEDQNGNPNYVKDLNWIHVQ  
 DAEAWKLLKVGKRNQSFASHTLNQNSSRSHSIFIRILHLQEGDIVPKISELSLCDLAGSERCKDQKS  
 GERLKEAGNINTSLHTLGRGIAALRQNRQNRSKQNLVPRFRDQSKLTRVFQGGFTGRGRSCMIVNVNPCAST  
 YDETLHVAKFSIASQLVHAPPMQLGFPSLHFSIKEHLSQVSPSLEKGAADTGLDDDIENEADISMYGK  
 EELLQWEAMKTLKLERQEKLEMLHRDEICNEMVEQMQQREQWCSEHLDTQKELLEEMYEELKNILK  
 ESLSFYQEEIQERDEKIEELEALLQEARQQSVAHQQSGSELALRRSQRLAASASTQQLQEVKAKLQQCK  
 AELNSTTEELHXYQKMLEPPPSAKPFTIDVDKLEEGQKNIRLLRTELQKLGESLQSAERACCHSTGAGK  
 LRQALTTCCDILIKQDQTLAELQNNMVLKLDLRKKAACIAEQYHTVLKLGQVSAKRLGTNQNENQQPN  
 QQPPGKKPFLRNLLPRTPTCQSSTDCSPYARILRSRRSPLLKSGPFGKKY

TRTRPLEQKLISEEDLAANDILDYKDDDDKV

**Tag:** C-Myc/DDK  
**Predicted MW:** 100.1 kDa  
**Concentration:** >0.05 µg/µL as determined by microplate BCA method  
**Purity:** > 80% as determined by SDS-PAGE and Coomassie blue staining  
**Buffer:** 25 mM Tris-HCl, 100 mM glycine, pH 7.3, 10% glycerol  
**Preparation:** Recombinant protein was captured through anti-DDK affinity column followed by conventional chromatography steps.



[View online »](#)

**Note:** For testing in cell culture applications, please filter before use. Note that you may experience some loss of protein during the filtration process.

**Storage:** Store at -80°C.

**Stability:** Stable for 12 months from the date of receipt of the product under proper storage and handling conditions. Avoid repeated freeze-thaw cycles.

**RefSeq:** [NP\\_005724](#)

**Locus ID:** 10112

**UniProt ID:** [O95235](#)

**RefSeq Size:** 2972

**Cytogenetics:** 5q31.2

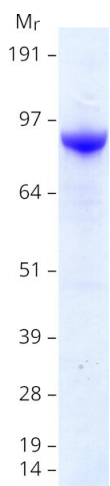
**RefSeq ORF:** 2670

**Synonyms:** MKLP2; RAB6KIFL

**Summary:** Mitotic kinesin required for chromosome passenger complex (CPC)-mediated cytokinesis. Following phosphorylation by PLK1, involved in recruitment of PLK1 to the central spindle. Interacts with guanosine triphosphate (GTP)-bound forms of RAB6A and RAB6B. May act as a motor required for the retrograde RAB6 regulated transport of Golgi membranes and associated vesicles along microtubules. Has a microtubule plus end-directed motility. [UniProtKB/Swiss-Prot Function]

**Protein Families:** Druggable Genome

### Product images:



Coomassie blue staining of purified KIF20A protein (Cat# [TP301100]). The protein was produced from HEK293T cells transfected with KIF20A cDNA clone (Cat# [RC201100]) using MegaTran 2.0 (Cat# [TT210002]).