

## Product datasheet for TP301100

### KIF20A (NM\_005733) Human Recombinant Protein

#### Product data:

Product Type:	Recombinant Proteins
Description:	Recombinant protein of human kinesin family member 20A (KIF20A), 20 µg
Species:	Human
Expression Host:	HEK293T
Expression cDNA Clone or AA Sequence:	>RC201100 representing NM_005733 Red=Cloning site Green=Tags(s)

MSQGILSPPAGLLSDDDVVSPMFESTAADLGSVRKNLLSDCSVSTSLQVPSSEDSMEKVKVYLR  
VRPLLPELERQEDQGCVRIENVETLVLQAPKDSFALKSNERGIGQATHRFTFSQIFGPEVGGQASFFNLT  
VKEMVKDVLKQGNWLIYTYGVTNSGKTHTIQGTIKDGGILPRSLALIFNSLQGQLHPTDLKPLLSNEVI  
WLDSKQIRQEEMKLSLLNGGLQEEELSTSLKRSVYIESRIGTSTSFDSGIAGLSSISQCTSSSQLDETS  
HRWAQPDAPLPVPANIRFSIWISFFEIYNELLYDLLEPPSQQRKRQTLRLCEDQNGNPNYVKDLNWIHVQ  
DAEEAWKLLKVGRKNQSFATHLNQNSSRSHSIFSIRILHLQEGDIVPKISELSLCDLAGSERCKDQKS  
GERLKEAGNINTSLHTLGRGIAALRQNRQNSKQNLVPRDQSKLTRVFQGGFTGRGRSCMIVNVNPCAST  
YDETLHVAKFSIASQLVHAPPMQLGFPSLHSFIKEHLSQVSPSLEKGAADTGLDDDDIENEADISMYGK  
EELLQWEAMKTLKLEKQEKLEMLHRDEICNEMVEQMQQREQWCSEHLDTQKELLEEMYEELNLIK  
ESLTSFYQEEIQERDEKIEELEALLQEARQQSVAHQSGSELALRRSQRLAASASTQQLQEVKAKLQCK  
AELNSTTEELHXYQKMLEPPPSAKPFTIDVDKLEEGQKNIRLLRTELQKLGESLQSAERACCHSTGAGK  
LRQALTTCCDILIKQDQTLAELQNNMVLKDLRKAACIAEQYHTVLKLGQVSAKRLGTNQNENQPN  
QQPPGKKPFLRNLLPRTPTCQSSTDCSPYARILRSRRSPLLKSGPFGKKY

TRTRPLEQKLISEEDLAANDILDYKDDDDKV

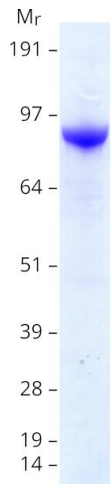
Tag:	C-Myc/DDK
Predicted MW:	100.1 kDa
Concentration:	>0.05 µg/µL as determined by microplate BCA method
Purity:	> 80% as determined by SDS-PAGE and Coomassie blue staining
Buffer:	25 mM Tris-HCl, 100 mM glycine, pH 7.3, 10% glycerol
Preparation:	Recombinant protein was captured through anti-DDK affinity column followed by conventional chromatography steps.



[View online »](#)

<b>Note:</b>	For testing in cell culture applications, please filter before use. Note that you may experience some loss of protein during the filtration process.
<b>Storage:</b>	Store at -80°C.
<b>Stability:</b>	Stable for 12 months from the date of receipt of the product under proper storage and handling conditions. Avoid repeated freeze-thaw cycles.
<b>RefSeq:</b>	<a href="#">NP_005724</a>
<b>Locus ID:</b>	10112
<b>UniProt ID:</b>	<a href="#">O95235</a>
<b>RefSeq Size:</b>	2972
<b>Cytogenetics:</b>	5q31.2
<b>RefSeq ORF:</b>	2670
<b>Synonyms:</b>	MKLP2; RAB6KIFL
<b>Summary:</b>	Mitotic kinesin required for chromosome passenger complex (CPC)-mediated cytokinesis. Following phosphorylation by PLK1, involved in recruitment of PLK1 to the central spindle. Interacts with guanosine triphosphate (GTP)-bound forms of RAB6A and RAB6B. May act as a motor required for the retrograde RAB6 regulated transport of Golgi membranes and associated vesicles along microtubules. Has a microtubule plus end-directed motility. [UniProtKB/Swiss-Prot Function]
<b>Protein Families:</b>	Druggable Genome

### Product images:



Coomassie blue staining of purified KIF20A protein (Cat# TP301100). The protein was produced from HEK293T cells transfected with KIF20A cDNA clone (Cat# [RC201100]) using MegaTran 2.0 (Cat# [TT210002]).