

Product datasheet for **TP301085**

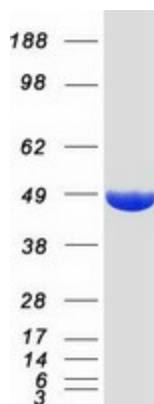
NSE (ENO2) (NM_001975) Human Recombinant Protein

Product data:

Product Type:	Recombinant Proteins
Description:	Recombinant protein of human enolase 2 (gamma, neuronal) (ENO2)
Species:	Human
Expression Host:	HEK293T
Tag:	C-Myc/DDK
Predicted MW:	47.1 kDa
Concentration:	>50 ug/mL as determined by microplate BCA method
Purity:	> 80% as determined by SDS-PAGE and Coomassie blue staining
Buffer:	25 mM Tris.HCl, pH 7.3, 100 mM glycine, 10% glycerol
Preparation:	Recombinant protein was captured through anti-DDK affinity column followed by conventional chromatography steps.
Storage:	Store at -80°C.
Stability:	Stable for 12 months from the date of receipt of the product under proper storage and handling conditions. Avoid repeated freeze-thaw cycles.
RefSeq:	NP_001966
Locus ID:	2026
RefSeq Size:	2423
Cytogenetics:	12p13.31
RefSeq ORF:	1302
Synonyms:	HEL-S-279; NSE
Summary:	This gene encodes one of the three enolase isoenzymes found in mammals. This isoenzyme, a homodimer, is found in mature neurons and cells of neuronal origin. A switch from alpha enolase to gamma enolase occurs in neural tissue during development in rats and primates. [provided by RefSeq, Jul 2008]
Protein Pathways:	Glycolysis / Gluconeogenesis, Metabolic pathways, RNA degradation



[View online »](#)

Product images:

Coomassie blue staining of purified ENO2 protein (Cat# TP301085). The protein was produced from HEK293T cells transfected with ENO2 cDNA clone (Cat# [RC201085]) using MegaTran 2.0 (Cat# [TT210002]).