

Product datasheet for **TP301083**

TOMM34 (NM_006809) Human Recombinant Protein

Product data:

Product Type:	Recombinant Proteins
Description:	Recombinant protein of human translocase of outer mitochondrial membrane 34 (TOMM34), nuclear gene encoding mitochondrial protein, 20 µg
Species:	Human
Expression Host:	HEK293T
Expression cDNA Clone or AA Sequence:	>RC201083 protein sequence Red =Cloning site Green =Tags(s)
	<p>MAPKFPDSVEELRAAGNESFRNGQYAEASALYGRALRVLQAQGSSDPEEESVLYSNRAACHLKDGNCRDC IKDCTSALALVPFSIKPLRRASAYEALEKYPMAYVDYKTVLQIDDNVTSAVEGINRMTRALMDSLGP EWRLKLPISLVPVSAQKRWNSLPSENHKEMAKSKSKETTATKNRVPSAGDVEKARVLKEEGNELVKKGNHK KAIEKYSESLLCNLESATYSNRALCYLVLKQYTEAVKDCTEALKLDGKNVKAFYRRAQAHKALKDYKSS FADISNLLQIEPRNGPAQKLRQEVKQNLH</p> <p>TRTRPLEQKLISEEDLAANDILDYKDDDDKV</p>
Tag:	C-Myc/DDK
Predicted MW:	34.4 kDa
Concentration:	>0.05 µg/µL as determined by microplate BCA method
Purity:	> 80% as determined by SDS-PAGE and Coomassie blue staining
Buffer:	25 mM Tris-HCl, 100 mM glycine, pH 7.3, 10% glycerol
Preparation:	Recombinant protein was captured through anti-DDK affinity column followed by conventional chromatography steps.
Note:	For testing in cell culture applications, please filter before use. Note that you may experience some loss of protein during the filtration process.
Storage:	Store at -80°C.
Stability:	Stable for 12 months from the date of receipt of the product under proper storage and handling conditions. Avoid repeated freeze-thaw cycles.
RefSeq:	<u>NP_006800</u>
Locus ID:	10953



[View online »](#)

UniProt ID: [Q15785](#)

RefSeq Size: 2066

Cytogenetics: 20q13.12

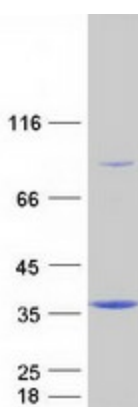
RefSeq ORF: 927

Synonyms: HTOM34P; TOM34; URCC3

Summary: The protein encoded by this gene is involved in the import of precursor proteins into mitochondria. The encoded protein has a chaperone-like activity, binding the mature portion of unfolded proteins and aiding their import into mitochondria. This protein, which is found in the cytoplasm and sometimes associated with the outer mitochondrial membrane, has a weak ATPase activity and contains 6 TPR repeats. [provided by RefSeq, Jul 2008]

Protein Families: Druggable Genome

Product images:



Coomassie blue staining of purified TOMM34 protein (Cat# TP301083). The protein was produced from HEK293T cells transfected with TOMM34 cDNA clone (Cat# [RC201083]) using MegaTran 2.0 (Cat# [TT210002]).