

## Product datasheet for **TP301080M**

### MYL9 (NM\_181526) Human Recombinant Protein

#### Product data:

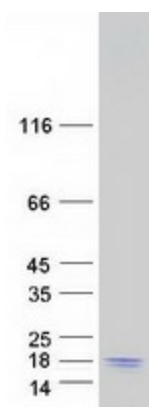
Product Type:	Recombinant Proteins
Description:	Recombinant protein of human myosin, light chain 9, regulatory (MYL9), transcript variant 2, 100 µg
Species:	Human
Expression Host:	HEK293T
Expression cDNA Clone or AA Sequence:	>RC201080 protein sequence <b>Red</b> =Cloning site <b>Green</b> =Tags(s)
	MSSKRAKAKTTKKRPQRATSNVFMFDQSQIQEFKEAFNMIDQNRDGFIDKEDLHDMMLASLGFHEDHLR ELLTTMGDRFTDEEVDEMYREAPIDKKGNFNYVEFTRILKHGAKDKDD
	<b>TR</b> TRPLEQKLISEEDLAANDILDYKDDDDKV
Tag:	C-Myc/DDK
Predicted MW:	13.7 kDa
Concentration:	>0.05 µg/µL as determined by microplate BCA method
Purity:	> 80% as determined by SDS-PAGE and Coomassie blue staining
Buffer:	25 mM Tris-HCl, 100 mM glycine, pH 7.3, 10% glycerol
Preparation:	Recombinant protein was captured through anti-DDK affinity column followed by conventional chromatography steps.
Note:	For testing in cell culture applications, please filter before use. Note that you may experience some loss of protein during the filtration process.
Storage:	Store at -80°C.
Stability:	Stable for 12 months from the date of receipt of the product under proper storage and handling conditions. Avoid repeated freeze-thaw cycles.
RefSeq:	<a href="#">NP_852667</a>
Locus ID:	10398
UniProt ID:	<a href="#">P24844</a>
RefSeq Size:	1054



[View online »](#)

<b>Cytogenetics:</b>	20q11.23
<b>RefSeq ORF:</b>	354
<b>Synonyms:</b>	LC20; MLC-2C; MLC2; MMIHS4; MRLC1; MYRL2
<b>Summary:</b>	Myosin, a structural component of muscle, consists of two heavy chains and four light chains. The protein encoded by this gene is a myosin light chain that may regulate muscle contraction by modulating the ATPase activity of myosin heads. The encoded protein binds calcium and is activated by myosin light chain kinase. Two transcript variants encoding different isoforms have been found for this gene. [provided by RefSeq, Jul 2008]
<b>Protein Pathways:</b>	Focal adhesion, Leukocyte transendothelial migration, Regulation of actin cytoskeleton, Tight junction, Vascular smooth muscle contraction

### Product images:



Coomassie blue staining of purified MYL9 protein (Cat# [TP301080]). The protein was produced from HEK293T cells transfected with MYL9 cDNA clone (Cat# [RC201080]) using MegaTran 2.0 (Cat# [TT210002]).