

## Product datasheet for **TP301079L**

### SSR3 (NM\_007107) Human Recombinant Protein

#### Product data:

Product Type:	Recombinant Proteins
Description:	Recombinant protein of human signal sequence receptor, gamma (translocon-associated protein gamma) (SSR3), 1 mg
Species:	Human
Expression Host:	HEK293T
Expression cDNA Clone or AA Sequence:	>RC201079 protein sequence <b>Red</b> =Cloning site <b>Green</b> =Tags(s)
	<p>MAPKGSSKQQSEEDLLLQDFSRNLSAKSSALFFGNAFIVSAIPWLYWRIWHMDLIQSAVLYSVMTLVST YLVAAYKNVFLKHKVAQKREDAVSKEVTRKLSEADNRKMSRKEKDERILWKKNEVADYEATTSIFY NNTLFLVVIVASFFILKNFNPTVNYILSISASSGLIALLLSTGSK</p> <p><b>SGPTRTRPLEQKLISEEDLAANDILDYKDDDDKV</b></p>
Tag:	C-Myc/DDK
Predicted MW:	20.9 kDa
Concentration:	>0.05 µg/µL as determined by microplate BCA method
Purity:	> 80% as determined by SDS-PAGE and Coomassie blue staining
Buffer:	25 mM Tris-HCl, 100 mM glycine, pH 7.3, 10% glycerol
Preparation:	Recombinant protein was captured through anti-DDK affinity column followed by conventional chromatography steps.
Note:	For testing in cell culture applications, please filter before use. Note that you may experience some loss of protein during the filtration process.
Storage:	Store at -80°C.
Stability:	Stable for 12 months from the date of receipt of the product under proper storage and handling conditions. Avoid repeated freeze-thaw cycles.
RefSeq:	<u><a href="#">NP_009038</a></u>
Locus ID:	6747
UniProt ID:	<u><a href="#">Q9UNL2</a></u>



[View online »](#)

RefSeq Size: 3734

Cytogenetics: 3q25.31

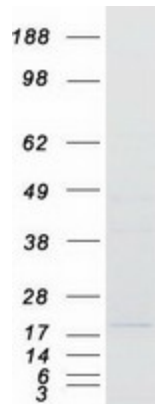
RefSeq ORF: 555

Synonyms: TRAPG

**Summary:** The signal sequence receptor (SSR) is a glycosylated endoplasmic reticulum (ER) membrane receptor associated with protein translocation across the ER membrane. The SSR is comprised of four membrane proteins/subunits: alpha, beta, gamma, and delta. The first two are glycosylated subunits and the latter two are non-glycosylated subunits. This gene encodes the gamma subunit, which is predicted to span the membrane four times. [provided by RefSeq, Aug 2010]

**Protein Families:** Druggable Genome, Transmembrane

### Product images:



Coomassie blue staining of purified SSR3 protein (Cat# [TP301079]). The protein was produced from HEK293T cells transfected with SSR3 cDNA clone (Cat# [RC201079]) using MegaTran 2.0 (Cat# [TT210002]).