

Product datasheet for **TP301061M**

CMTM6 (NM_017801) Human Recombinant Protein

Product data:

Product Type:	Recombinant Proteins
Description:	Recombinant protein of human CKLF-like MARVEL transmembrane domain containing 6 (CMTM6), 100 µg
Species:	Human
Expression Host:	HEK293T
Expression cDNA Clone or AA Sequence:	>RC201061 protein sequence Red =Cloning site Green =Tags(s)

MENGA VYSP TTEEDPGPARGPRSGLAAYFFMGR LPLLRRLKGLQLLSLLAFICEEWSQCTLCGGLYF
FEFVSCSAFLLSLLILIVYCTPFYERVDTTKVKSSDFYITLGTGCVFLLASIIIFVSTHDR TSAEIAAIVF
GFIASFMLLDFITMLYEKRQESQLRKPENTTRA EALTEPLNA

TRTRPLEQKLISEEDLAANDILDYKDDDDKV

Tag:	C-Myc/DDK
Predicted MW:	20.2 kDa
Concentration:	>0.05 µg/µL as determined by microplate BCA method
Purity:	> 80% as determined by SDS-PAGE and Coomassie blue staining
Buffer:	25 mM Tris-HCl, 100 mM glycine, pH 7.3, 10% glycerol
Preparation:	Recombinant protein was captured through anti-DDK affinity column followed by conventional chromatography steps.
Note:	For testing in cell culture applications, please filter before use. Note that you may experience some loss of protein during the filtration process.
Storage:	Store at -80°C.
Stability:	Stable for 12 months from the date of receipt of the product under proper storage and handling conditions. Avoid repeated freeze-thaw cycles.
RefSeq:	<u>NP_060271</u>
Locus ID:	54918
UniProt ID:	<u>Q9NX76</u>



[View online »](#)

RefSeq Size: 3384

Cytogenetics: 3p22.3

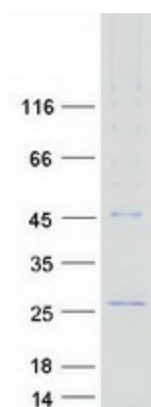
RefSeq ORF: 549

Synonyms: CKLFSF6; PRO2219

Summary: This gene belongs to the chemokine-like factor gene superfamily, a novel family that is similar to the chemokine and transmembrane 4 superfamilies. This gene is one of several chemokine-like factor genes located in a cluster on chromosome 3. This gene is widely expressed in many tissues, but the exact function of the encoded protein is unknown. [provided by RefSeq, Jul 2008]

Protein Families: Transmembrane

Product images:



Coomassie blue staining of purified CMTM6 protein (Cat# [TP301061]). The protein was produced from HEK293T cells transfected with CMTM6 cDNA clone (Cat# [RC201061]) using MegaTran 2.0 (Cat# [TT210002]).