

## Product datasheet for TP301061L

### CMTM6 (NM\_017801) Human Recombinant Protein

#### Product data:

|                                       |   |
|---------------------------------------|---|
| Product Type:                         | Recombinant Proteins  |
| Description:                          | Recombinant protein of human CKLF-like MARVEL transmembrane domain containing 6 (CMTM6), 1 mg |
| Species:                              | Human   |
| Expression Host:                      | HEK293T   |
| Expression cDNA Clone or AA Sequence: | >RC201061 protein sequence<br>Red=Cloning site Green=Tags(s)                                  |

MENGA VYSP TTEEDPGPARGPRSGLAAYFFMGR LPLLRRLKGLQLLSLLAFICEEWSQCTLCGGLYF  
FEFVSCSAFLLSLLILIVYCTPFYERVDTTKVKSSDFYITLGTGCVFLLASIIIFVSTHDRTSAEIAAIVF  
GFIASFMLLDFITMLYEKRQESQLRKPENTTRAEALTEPLNA

TRTRPLEQKLISEEDLAANDILDYKDDDDKV

|                |  |
|----------------|--|
| Tag:           | C-Myc/DDK  |
| Predicted MW:  | 20.2 kDa   |
| Concentration: | >0.05 µg/µL as determined by microplate BCA method   |
| Purity:        | > 80% as determined by SDS-PAGE and Coomassie blue staining  |
| Buffer:        | 25 mM Tris-HCl, 100 mM glycine, pH 7.3, 10% glycerol   |
| Preparation:   | Recombinant protein was captured through anti-DDK affinity column followed by conventional chromatography steps.                                     |
| Note:          | For testing in cell culture applications, please filter before use. Note that you may experience some loss of protein during the filtration process. |
| Storage:       | Store at -80°C.  |
| Stability:     | Stable for 12 months from the date of receipt of the product under proper storage and handling conditions. Avoid repeated freeze-thaw cycles.        |
| RefSeq:        | <u><a href="#">NP_060271</a></u>   |
| Locus ID:      | 54918  |
| UniProt ID:    | <u><a href="#">Q9NX76</a></u>  |



[View online »](#)

RefSeq Size: 3384

Cytogenetics: 3p22.3

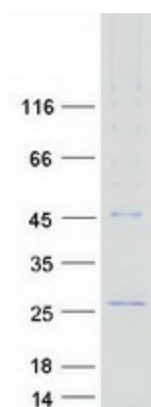
RefSeq ORF: 549

Synonyms: CKLFSF6; PRO2219

**Summary:** This gene belongs to the chemokine-like factor gene superfamily, a novel family that is similar to the chemokine and transmembrane 4 superfamilies. This gene is one of several chemokine-like factor genes located in a cluster on chromosome 3. This gene is widely expressed in many tissues, but the exact function of the encoded protein is unknown. [provided by RefSeq, Jul 2008]

**Protein Families:** Transmembrane

### Product images:



Coomassie blue staining of purified CMTM6 protein (Cat# [TP301061]). The protein was produced from HEK293T cells transfected with CMTM6 cDNA clone (Cat# [RC201061]) using MegaTran 2.0 (Cat# [TT210002]).