

Product datasheet for TP301036

FAM3C (NM_014888) Human Recombinant Protein

Product data:

Product Type:	Recombinant Proteins
Description:	Recombinant protein of human family with sequence similarity 3, member C (FAM3C), transcript variant 1, 20 µg
Species:	Human
Expression Host:	HEK293T
Expression cDNA Clone or AA Sequence:	>RC201036 protein sequence Red =Cloning site Green =Tags(s)
	<p>MRVAGAAKLWAVAVFLLTFYVISQVFEIKMDASLG NLFARSALDTAARSTKPPRYKCGISKACPEKHFA FKMASGAANVVGPKICLEDNVLMSGVKNNVGRGINVALANGKTGEVLDTKYFDMWGGDVAPFIEFLKAIQ DGTIVLMGTYDDGATKLNDEARRLIADLGSTSITNLGFRDNWVFCGGKGIKTKSPFEQHIKNNKDTNKYE GWPEVEMEGCIPQKQD</p> <p>TRTRPLEQKLISEEDLAANDILDYKDDDDKV</p>
Tag:	C-Myc/DDK
Predicted MW:	22.1 kDa
Concentration:	>0.05 µg/µL as determined by microplate BCA method
Purity:	> 80% as determined by SDS-PAGE and Coomassie blue staining
Buffer:	25 mM Tris-HCl, 100 mM glycine, pH 7.3, 10% glycerol
Preparation:	Recombinant protein was captured through anti-DDK affinity column followed by conventional chromatography steps.
Note:	For testing in cell culture applications, please filter before use. Note that you may experience some loss of protein during the filtration process.
Storage:	Store at -80°C.
Stability:	Stable for 12 months from the date of receipt of the product under proper storage and handling conditions. Avoid repeated freeze-thaw cycles.
RefSeq:	<u>NP_055703</u>
Locus ID:	10447



[View online »](#)

UniProt ID: [Q92520](#)

RefSeq Size: 2552

Cytogenetics: 7q31.31

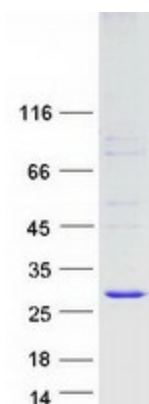
RefSeq ORF: 681

Synonyms: GS3786; ILEI

Summary: This gene is a member of the family with sequence similarity 3 (FAM3) family and encodes a secreted protein with a GG domain. A change in expression of this protein has been noted in pancreatic cancer-derived cells. [provided by RefSeq, Mar 2010]

Protein Families: Secreted Protein, Transmembrane

Product images:



Coomassie blue staining of purified FAM3C protein (Cat# TP301036). The protein was produced from HEK293T cells transfected with FAM3C cDNA clone (Cat# [RC201036]) using MegaTran 2.0 (Cat# [TT210002]).