

## Product datasheet for **TP301034M**

### CCDC56 (COA3) (NM\_001040431) Human Recombinant Protein

#### Product data:

**Product Type:** Recombinant Proteins

**Description:** Recombinant protein of human coiled-coil domain containing 56 (CCDC56), 100 µg

**Species:** Human

**Expression Host:** HEK293T

**Expression cDNA Clone  
or AA Sequence:** >RC201034 protein sequence  
**Red**=Cloning site **Green**=Tags(s)

MASSGAGDPLDSKRGEAPFAQRIDPTREKLTPEQLHSMRQAEALAQWQKVLPRRRTRNIVTGLGIGALVLA  
IYGTYFYSISQERFLDELEDEAKAARARALARASGS

**TRTRPLEQKLISEEDLAANDILDYKDDDDKV**

**Tag:** C-Myc/DDK

**Predicted MW:** 11.6 kDa

**Concentration:** >0.05 µg/µL as determined by microplate BCA method

**Purity:** > 80% as determined by SDS-PAGE and Coomassie blue staining

**Buffer:** 25 mM Tris-HCl, 100 mM glycine, pH 7.3, 10% glycerol

**Preparation:** Recombinant protein was captured through anti-DDK affinity column followed by conventional chromatography steps.

**Note:** For testing in cell culture applications, please filter before use. Note that you may experience some loss of protein during the filtration process.

**Storage:** Store at -80°C.

**Stability:** Stable for 12 months from the date of receipt of the product under proper storage and handling conditions. Avoid repeated freeze-thaw cycles.

**RefSeq:** [NP\\_001035521](#)

**Locus ID:** 28958

**UniProt ID:** [Q9Y2R0](#)

**RefSeq Size:** 808

**Cytogenetics:** 17q21.2



[View online »](#)

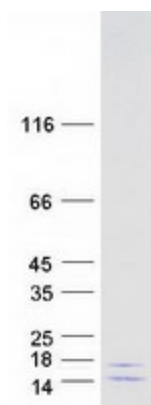
RefSeq ORF: 318

Synonyms: CCDC56; COX25; HSPC009; MC4DN14; MITRAC12

Summary: This gene encodes a member of the cytochrome c oxidase assembly factor family. Studies of a related gene in fly suggest that the encoded protein is localized to mitochondria and is essential for cytochrome c oxidase function. [provided by RefSeq, Nov 2012]

Protein Families: Transmembrane

### Product images:



Coomassie blue staining of purified COA3 protein (Cat# [TP301034]). The protein was produced from HEK293T cells transfected with COA3 cDNA clone (Cat# [RC201034]) using MegaTran 2.0 (Cat# [TT210002]).