

Product datasheet for **TP301023L**

COPZ1 (NM_016057) Human Recombinant Protein

Product data:

Product Type:	Recombinant Proteins
Description:	Recombinant protein of human coatomer protein complex, subunit zeta 1 (COPZ1), 1 mg
Species:	Human
Expression Host:	HEK293T
Expression cDNA Clone or AA Sequence:	>RC201023 protein sequence Red =Cloning site Green =Tags(s)
	MEALILEPSLYTVKAILILDNDGDRLFAKYDDTYPVKEQKAFEKNIFNKTHRTDSEIALLEGLTWYK SSIDLYFYVIGSSYENELMLMAVLNCLFDSLSQMLRKNVEKRALLENMEGLFLAVDEIVDGGVILESDPQ QVHRVALRGEDVPLTEQTVSQVLQSAKEQIKWSLLR
	TRTRPLEQKLISEEDLAANDILDYKDDDDKV
Tag:	C-Myc/DDK
Predicted MW:	20 kDa
Concentration:	>0.05 µg/µL as determined by microplate BCA method
Purity:	> 80% as determined by SDS-PAGE and Coomassie blue staining
Buffer:	25 mM Tris-HCl, 100 mM glycine, pH 7.3, 10% glycerol
Preparation:	Recombinant protein was captured through anti-DDK affinity column followed by conventional chromatography steps.
Note:	For testing in cell culture applications, please filter before use. Note that you may experience some loss of protein during the filtration process.
Storage:	Store at -80°C.
Stability:	Stable for 12 months from the date of receipt of the product under proper storage and handling conditions. Avoid repeated freeze-thaw cycles.
RefSeq:	<u>NP_057141</u>
Locus ID:	22818
UniProt ID:	<u>P61923</u> , <u>A0A024RB72</u>
RefSeq Size:	1954



[View online »](#)

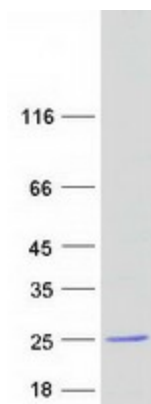
Cytogenetics: 12q13.13

RefSeq ORF: 531

Synonyms: CGI-120; COPZ; HSPC181; zeta-COP; zeta1-COP

Summary: This gene encodes a subunit of the cytoplasmic coatamer protein complex, which is involved in autophagy and intracellular protein trafficking. The coatamer protein complex is comprised of seven subunits and functions as the coat protein of coat protein complex (COP)I-vesicles. Alternative splicing results in multiple transcript variants. [provided by RefSeq, Nov 2012]

Product images:



Coomassie blue staining of purified COPZ1 protein (Cat# [TP301023]). The protein was produced from HEK293T cells transfected with COPZ1 cDNA clone (Cat# [RC201023]) using MegaTran 2.0 (Cat# [TT210002]).