

Product datasheet for TP301021M

Suppressor of Fused (SUFU) (NM_016169) Human Recombinant Protein

Product data:

Product Type:	Recombinant Proteins
Description:	Recombinant protein of human suppressor of fused homolog (Drosophila) (SUFU), 100 µg
Species:	Human
Expression Host:	HEK293T
Expression cDNA Clone or AA Sequence:	>RC201021 protein sequence Red=Cloning site Green=Tags(s)

MAELRPSGAPGPTAPPAPGPTAPPAFASLFPPGLHAIYGECRRLYPDQPNPLQVTAIVKYWLGGPDPLDY
VSMYRNVGSPSANIPEHWHYISFGLSDLYGDNRVHEFTGTDGSPSGFGFELTFRLKRETGESAPPTWPAEL
MQGLARYVFQSENTFCSGDHVSWHSPLDNSESRIQHMLLTEDPQMMPVQTPFGVVTFLQIVGVCTEELHS
AQQWNGQGILELLRTVPIAGGPWLITDMRRGETIFEIDPHLQERVDKGIETDGSNLSGVSAKCAWDDLRSR
PPEDEDSRSICIGTQPRRLSGKDTEQIRETLRRGLEINSKPVLPINPQRQNGLAHDRAPSRKDSLES
SSTAIPHELIRTRQLESVHLKFNQESGALIPLCLRGRLLHGRHFTYKSITGDMAITFVSTGVEGAFATE
EHPYAAHG PWLQILLTEEFVEKMLEDLLEDLTSPEEFKLPKEYSWPEKLLKVSILPDVVFDSPLH

TRTRPLEQKLISEEDLAANDILDYKDDDDKV

Tag:	C-Myc/DDK
Predicted MW:	53.8 kDa
Concentration:	>0.05 µg/µL as determined by microplate BCA method
Purity:	> 80% as determined by SDS-PAGE and Coomassie blue staining
Buffer:	25 mM Tris-HCl, 100 mM glycine, pH 7.3, 10% glycerol
Preparation:	Recombinant protein was captured through anti-DDK affinity column followed by conventional chromatography steps.
Note:	For testing in cell culture applications, please filter before use. Note that you may experience some loss of protein during the filtration process.
Storage:	Store at -80°C.
Stability:	Stable for 12 months from the date of receipt of the product under proper storage and handling conditions. Avoid repeated freeze-thaw cycles.
RefSeq:	<u>NP_057253</u>



[View online »](#)

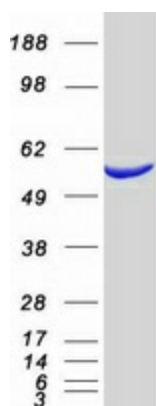
Locus ID: 51684
UniProt ID: [Q9UMX1](#)
RefSeq Size: 4994
Cytogenetics: 10q24.32
RefSeq ORF: 1452
Synonyms: JBTS32; PRO1280; SUFUH; SUFUXL

Summary: The Hedgehog signaling pathway plays an important role in early human development. The pathway is a signaling cascade that plays a role in pattern formation and cellular proliferation during development. This gene encodes a negative regulator of the hedgehog signaling pathway. Defects in this gene are a cause of medulloblastoma. Alternative splicing results in multiple transcript variants.[provided by RefSeq, May 2010]

Protein Families: Druggable Genome, Transcription Factors

Protein Pathways: Basal cell carcinoma, Hedgehog signaling pathway, Pathways in cancer

Product images:



Coomassie blue staining of purified SUFU protein (Cat# [TP301021]). The protein was produced from HEK293T cells transfected with SUFU cDNA clone (Cat# [RC201021]) using MegaTran 2.0 (Cat# [TT210002]).