

## Product datasheet for **TP301008M**

### WDR18 (NM\_024100) Human Recombinant Protein

#### Product data:

**Product Type:** Recombinant Proteins

**Description:** Recombinant protein of human WD repeat domain 18 (WDR18), 100 µg

**Species:** Human

**Expression Host:** HEK293T

**Expression cDNA Clone  
or AA Sequence:** >RC201008 protein sequence  
**Red**=Cloning site **Green**=Tags(s)

MAAPMEVAVCTDSAAPMWSCIVWELHSGANLLTYRGGQAGPRGLALLNGEYLLAAQLGKNYISAWELQRK  
DQLQKIMCPGPVTCLTASPNGLYVLAVAGVAESIHLWEVSTGNLLVILSRHYQDVSLQFTGDSSHFISGG  
KDCLVLVWSLCSVLQADPSRIPAPRHVWSHHTLPITDLHCGFGGPLARVATSSLDQTVKLWEVSSGELL  
SVLFDVSIMAVTMDLAEHMFCEGSEGSIFQVDLFTWPGQRERSFHEPQDAGKVFKGHRNQVTCLSVST  
GSVLLSGSHDETVRLWDVQSKQCIRTVALKGPVTNAAILLAPVSMLSSDFRPSLPLPHFNKHLLGAEHGD  
EPRHGGTLRLGLHQQGSEPSYLDRTQLQAVLCSTMEKSVLGGQDQLRVRVTELEDEVNLRKINRDLF  
DFSTRFITRPAK

**TRTRPLEQKLISEEDLAANDILDYKDDDDKV**

**Tag:** C-Myc/DDK

**Predicted MW:** 47.2 kDa

**Concentration:** >0.05 µg/µL as determined by microplate BCA method

**Purity:** > 80% as determined by SDS-PAGE and Coomassie blue staining

**Buffer:** 25 mM Tris-HCl, 100 mM glycine, pH 7.3, 10% glycerol

**Preparation:** Recombinant protein was captured through anti-DDK affinity column followed by conventional chromatography steps.

**Note:** For testing in cell culture applications, please filter before use. Note that you may experience some loss of protein during the filtration process.

**Storage:** Store at -80°C.

**Stability:** Stable for 12 months from the date of receipt of the product under proper storage and handling conditions. Avoid repeated freeze-thaw cycles.

**RefSeq:** [NP\\_077005](#)

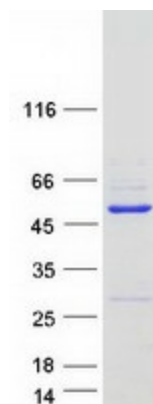


[View online »](#)

Locus ID: 57418  
UniProt ID: [Q9BV38](#)  
RefSeq Size: 1551  
Cytogenetics: 19p13.3  
RefSeq ORF: 1296  
Synonyms: lpi3; R32184\_1

**Summary:** This gene encodes a member of the WD repeat protein family. WD repeats are minimally conserved regions of approximately 40 amino acids typically bracketed by gly-his and trp-asp (GH-WD), which may facilitate formation of heterotrimeric or multiprotein complexes. Members of this family are involved in a variety of cellular processes, including cell cycle progression, signal transduction, apoptosis, and gene regulation. [provided by RefSeq, Jul 2008]

### Product images:



Coomassie blue staining of purified WDR18 protein (Cat# [TP301008]). The protein was produced from HEK293T cells transfected with WDR18 cDNA clone (Cat# [RC201008]) using MegaTran 2.0 (Cat# [TT210002]).